



CHILDCARE NEEDS ANALYSIS COUNTY LAOIS

June 2006

Laois County Childcare Committee Limited

Contents

i	Current Position.....	5
ii	Area-Based Approach.....	6
iii	Recommendations by Defined Area.....	9
1	Introduction.....	17
1.1	Report Scope.....	17
1.1.1	Focus.....	17
2	Pre-School Childcare Provision.....	18
2.1	Legislative Framework.....	18
2.1.1	Childminding Tax Relief.....	18
2.1.2	Types of Childcare Services.....	18
2.2	Current Childcare Provision.....	18
2.2.1	Service Category.....	20
2.2.3	Geographical Distribution.....	22
2.3	Parent and Toddler Groups.....	22
2.3.1	Ballyroan.....	22
2.3.2	Borris-in-Ossory.....	22
2.3.3	Clonaghadoo.....	22
2.3.4	Mountmellick.....	23
2.3.5	Mountrath.....	23
2.3.6	Portarlinton.....	23
2.3.7	Portlaoise.....	23
2.3.8	Rathdowney.....	23
2.3.9	Rosenallis.....	23
2.4	Primary School Provision.....	23
3	Childcare Demand Determinants.....	25
3.1	CSO Population Projections.....	25
3.1.1	Age Structure.....	25
3.1.2	Births.....	26
3.2	National Spatial Strategy Impacts.....	27
3.2.1	Regional Population Distribution.....	27
3.2.2	Gateways and Hubs.....	28
3.2.3	NSS Implementation.....	28
3.2.4	Development Magnets.....	29
3.3	County Laois - Gamma Profile and Projections.....	29
3.3.1	Population.....	29
3.3.2	Age Structure.....	30
3.3.3	Household Structure.....	30
3.3.4	Household Structure Projection.....	31
3.3.5	Social Class Structure.....	31
3.3.6	Travel to School, Work or College.....	31
3.3.7	Deprivation Index.....	32
3.4	Sub-County Profile.....	32
3.4.1	Population Change.....	33
3.5	Laois County Development Plan.....	35
3.5.1	Components of Population Growth.....	35
3.5.2	Population Projections.....	35
3.5.3	Settlement Strategy.....	36
3.5.4	Development Pressure.....	37
3.5.5	Contemporary Developments.....	38
3.6	Childcare Demand Summary.....	39
3.6.1	Population.....	39
3.6.2	Female Age Structure and Fertility Rate.....	39
3.6.3	Children.....	39
3.6.4	Potential Population Growth Nodes.....	39
4	Consultation Process 2006.....	41
4.1	Consultation Process Summary Outcomes.....	42
4.1.1	County Profile.....	42
4.1.2	Provision.....	43
4.1.3	Fee Structures.....	44
4.1.4	Governance.....	44
4.1.5	Training.....	44
5	Needs Analysis.....	45
5.1	Portlaoise Area.....	45
5.1.1	Childcare Capacity.....	46
5.1.2	Travel Distance.....	47
5.2	Mountmellick Area.....	47
5.2.1	Childcare Capacity.....	48
5.2.2	Travel Distance.....	49
5.3	Borris-in-Ossory Area.....	49
5.3.1	Childcare Capacity.....	50
5.3.2	Travel Distance.....	50
5.4	Luggacurren Area.....	50
5.4.1	Childcare Capacity.....	51
5.4.2	Travel Distance.....	51
5.5	Emo Area.....	52
5.5.2	Childcare Capacity.....	52
5.5.2	Travel Distance.....	53
A1	Appendix One – Genesis.....	54
A2	Appendix Two - Notified Pre-Schools.....	55
A3	Appendix Three – Population Indicators by DED.....	57
A4	Appendix Four - Identified Growth Settlements.....	60
A5	Appendix Five – County Childcare Funding.....	64
B1	Bibliography.....	68

Figures

Figure 1 – Co. Laois Principal Settlements (OS).....	5	Figure 52 – Longevity of Service.....	42
Figure 2 – Five Electoral Areas (OS + LCC).....	6	Figure 53 – Service Types Offered.....	42
Figure 3 – Development Forces (LCC).....	6	Figure 54 – Current Provision.....	43
Figure 4 – Road and Rail Infrastructure (OS+LCC).....	7	Figure 55 – Numbers Waiting to Start September 2006.....	43
Figure 5 – Affluence and Deprivation 1991-2002 (Gamma/CSO).....	7	Figure 56 – Childminding Service.....	43
Figure 6 – Geographic Distribution of Survey Respondents.....	8	Figure 57 – Service User Profile.....	43
Figure 7 – HSE Notified Additional Providers.....	8	Figure 58 – General Fee Structure.....	44
Figure 8 – Portlaoise Electoral Area.....	9	Figure 59 – Policies and Procedures.....	44
Figure 9 – Portlaoise Area Current Childcare Attendees.....	9	Figure 60 – Training Participation.....	44
Figure 10 – Mountmellick Electoral Area.....	10	Figure 61 – Five Electoral Areas.....	45
Figure 11 – Mountmellick Area Current Childcare Attendees.....	11	Figure 62 – Portlaoise Electoral Area.....	46
Figure 12 – Borris-in-Ossory Electoral Area.....	12	Figure 63 – Portlaoise Area Current Childcare Capacity.....	47
Figure 13 – Borris-in-Ossory Current Childcare Attendance.....	12	Figure 64 – Mountmellick Electoral Area.....	48
Figure 14 – Luggacurren Electoral Area.....	14	Figure 65 – Mountmellick Relative Affluence/Deprivation (Gamma).....	48
Figure 15 – Luggacurren Area Current Childcare Attendance.....	14	Figure 66 – Mountmellick Area Current Childcare Capacity.....	48
Figure 16 – Emo Electoral Area.....	15	Figure 67 – Borris-in-Ossory Electoral Area.....	49
Figure 17 – Emo Area Current Childcare Attendees.....	15	Figure 68 – Borris-in-Ossory Current Childcare Capacity.....	50
Figure 18 – Laois Childcare Service Providers – Enrolment.....	19	Figure 69 – Additional HSE Notified Providers.....	50
Figure 19 – Provision Estimate by Age Band.....	20	Figure 70 – Luggacurren Electoral Area.....	51
Figure 20 – Service Categories.....	20	Figure 71 – Luggacurren Area Current Childcare Capacity.....	51
Figure 21 – Physical Distribution.....	22	Figure 72 – Emo Electoral Area.....	52
Figure 22 – Co. Laois Primary School Provision.....	23	Figure 73 – Emo Area Current Childcare Capacity.....	52
Figure 23 – Regional Location.....	25	Figure 74 – All Co. Laois Notified Pre-Schools (HSE June 2006).....	55
Figure 24 – Projected Population Change by Region 2002-2021 (CSO).....	25	Figure 75 – Population Indicators by DED (Gamma/CSO).....	57
Figure 25 – Projected Population Age Range 2001-2021 (CSO).....	26	Figure 76 – Growth Settlements 2006-2012 (LCDP).....	60
Figure 26 – Females aged 20-39 and Total Births (CSO).....	27	Figure 77 – County Childcare Funding 2000-April 2006.....	64
Figure 27 – Regional Household Distribution Estimates (NSS).....	27		
Figure 28 – Gateways and Hubs (NSS).....	28		
Figure 29 – Midlands Region (NSS).....	28		
Figure 30 – County Laois Road Network (LCDP).....	29		
Figure 31 – County Laois Population 1991-2002 (Gamma/CSO).....	29		
Figure 32 – County Laois Population 2002-2013.....	30		
Figure 33 – County Laois Age Structure 2002 (Gamma/CSO).....	30		
Figure 34 – Household Structure 2002 (Gamma/CSO).....	30		
Figure 35 – Household Structure Projection 2002-2013.....	31		
Figure 36 – Social Class Structure 2002 (Gamma/CSO).....	31		
Figure 37 – Commuting Distances 2002 (Gamma/CSO).....	31		
Figure 38 – Affluence and Deprivation 1991-2002 (Gamma/CSO).....	32		
Figure 39 – County Laois Electoral Divisions (Gamma).....	32		
Figure 40 – District Electoral Divisions (CSO).....	33		
Figure 41 – Town Populations 1996-2002 (CSO).....	33		
Figure 42 – High Population Growth DEDs 1991-2002 (Gamma/CSO).....	34		
Figure 43 – Distribution of Population Change 1996-2002 (Gamma/CSO).....	34		
Figure 44 – LCDP vs. CSO Population Projections.....	36		
Figure 45 – Settlement Strategy Towns and Villages (LCDP).....	36		
Figure 46 – Zones of Development Pressure (after LCDP).....	37		
Figure 47 – Average House Price Index 2005 (Permanent TSB).....	38		
Figure 48 – Immigration Addition to Population Projections.....	39		
Figure 49 – Potential Population Growth Nodes.....	39		
Figure 50 – Survey Responses Obtained.....	41		
Figure 51 – Service Model.....	42		

Disclaimer

Whilst every effort has been taken to ensure that the information contained in this report is correct, neither Laois County Childcare Committee nor its agents can guarantee accuracy.

Executive Summary

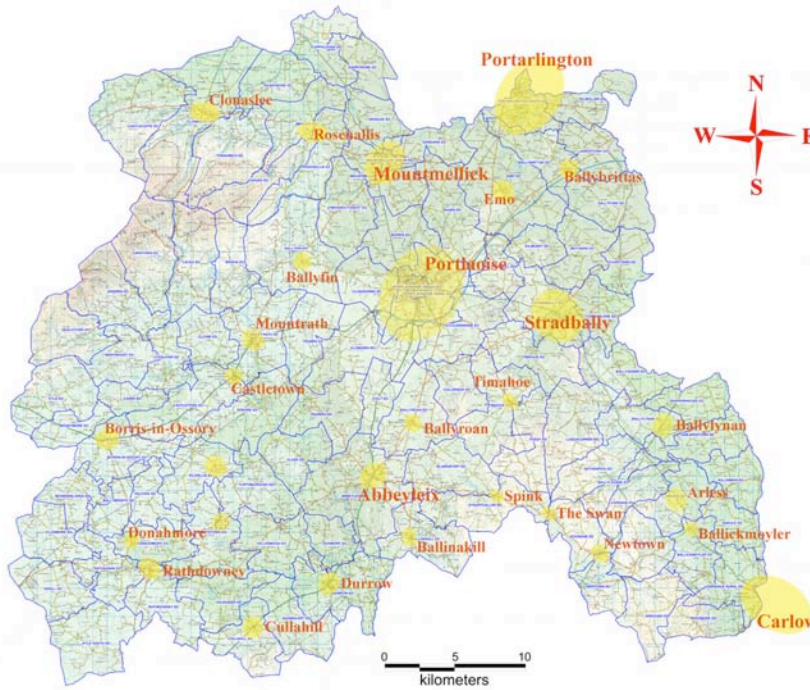
i Current Position

This report provides an analysis of the current childcare provision pattern across County Laois. This is derived from two sources: -

- a) Secondary data, including Gamma Statistics, Laois County Development Plan, households surveys and information from the County Council on planning and zoning to take into consideration proposed/projected areas of population; *and*
- b) Primary data, in the form of relevant group consultations carried out by Laois County Childcare Committee.

Preamble

Figure 1 – Co. Laois Principal Settlements (OS)



It is estimated that County Laois has a present-day population of approximately 64,000 – 65,000 persons, based on population growth estimates provided by the Central Statistics Office and Laois County Council.

It is further estimated that there are in the county approximately 3,100 children up to the age of 2 years; 2,050 aged between 3 and 4 years, and 1,900 in the range 5-6 years of age.

The county is strategically located on the main road and rail links from the capital to the south and west of the country. It also sits astride the Tullamore-Rosslare National Transport Corridor. All of these transport arteries are important as drivers of housing and enterprise development.

Population in the rural Electoral Divisions to the west of the county exhibited decline in the period 1996-2002. It is considered that this pattern may have continued to the present day. It is further anticipated that the population gains recorded in the same period by Portarlington, Portlaoise and Carlow will also have continued.

Laois County Council has identified significant development pressure to the north and east of the county, reflecting the proximity of metropolitan greater Dublin. This effect can be measured in the relatively expensive house price index, and the longer commuting times being experienced by people living in the county, when compared to national averages.

From a socio-economic perspective the county is performing well, with an improvement in overall affluence, as measured by Gamma, from -0.1 in 1991 to +13.4 in 2002. This reflects the general improvement in the Midlands area.

ii Area-Based Approach

Figure 2 – Five Electoral Areas (OS + LCC)

The county is considered in respect of five defined Electoral Areas. This approach permits direct comparison with the Pobal (formerly Area Development Management Limited) Childcare Census of 1999, and the subsequent Childcare Needs Analysis of 2004. It also reflects, to some extent, natural areas of development within the county.

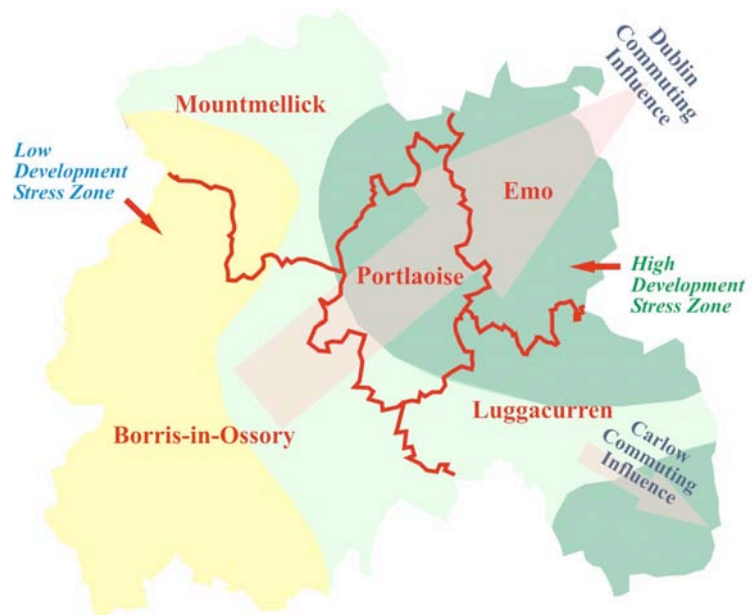


Local Development Features

Laois County Council has identified three zones in the county defined by the degree of development stress. The driver of the relative level of stress is seen to be desirability of settlement determined by commuting possibilities for employment.

Figure 3 – Development Forces (LCC)

Thus, settlements to the northeast of the county indicate generally higher population growth rates, reflecting the influence of the greater Dublin employment market, and also the location of Portarlinton and Portlaoise. To the southeast the local influence of Carlow can be seen.



In common with most of the rest of the country, population migration away from the urban centres towards the immediate hinterland can be seen, reflecting the perceived attraction of living outside the traditional urban centres.

The west of the county is generally considered to be under less development stress, with some DEDs indicating population loss over the period to 2002 and onwards.

The impact of the commuting phenomenon on the county can be judged from the relative house-price index, and the CSO information on recorded long-distance commuting. The former illustrates the financial attractiveness of property-buying in the Midlands area, although shows the county with the lowest rate of house-price growth (6%) over the period 2004-2005, compared to the three other counties of Westmeath (11%), Offaly (9%) and Longford (11%). This performance indicates the relative maturity of the housing market in the county.

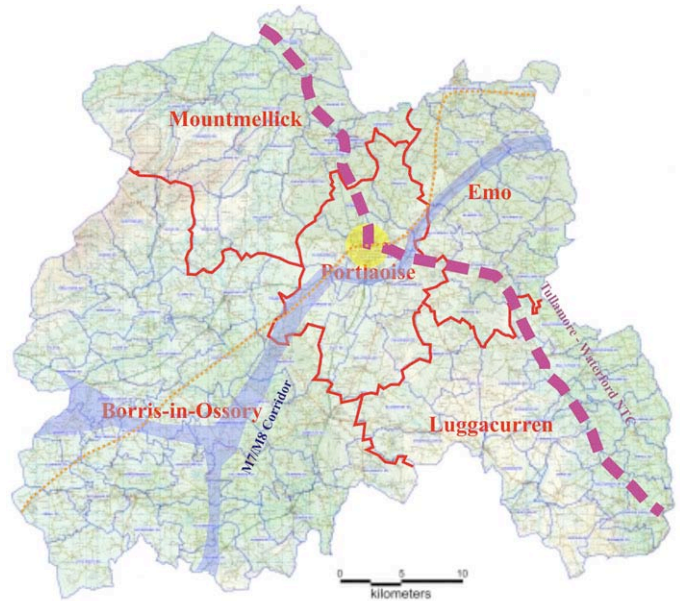
In terms of commuting distance, 10.8% of the population of Laois travel over 48 km, compared to 8.9% of the Midlands area, and 4.2% nationally.

Infrastructure

Road and rail infrastructures in the county are relatively well developed, thanks to the strategic National Transport Corridors that run through.

Figure 4 – Road and Rail Infrastructure (OS+LCC)

The convergence of the M7 and M8 to the southwest of the county may lead to increasing development pressure along these corridors, and adjacent to interchanges. The new high-speed intercity rail link between Cork and Dublin Heuston Station may also improve rail transfer possibilities at Portarlinton and Portlaoise, depending on the structuring of stops on this route. Additionally, the upgrading of commuter service frequencies between Kildare and Heuston, following the laying of a new four track section of line, may also have significant impact on commuting possibilities from the northeast of the county.



The impact of the National Transport Corridor from Tullamore to Waterford, and on to Rosslare will provide increased opportunity for direct freight transfer from the UK and Europe beyond through the sea-bridge. This, in turn, might provide a counter-balance to the present Dublin-dominated regional import route.

Absolute and Relative Disadvantage

In 2002 the National Average Deprivation Index (Gamma Statistics) Score was 17.4. Between 1991 and 2002 there was an improvement in the overall affluence of County Laois as there was a positive change of 13.5 in the Affluence/Deprivation Score of County Laois (-0.1 in 1991 to 13.4 in 2002).

Figure 5 – Affluence and Deprivation 1991-2002 (Gamma/CSO)

Area	Absolute Affluence/Deprivation Scores			Change in Deprivation Score 1991 -2002	Relative Affluence/Deprivation Scores		
	2002	1996	1991		2002	1996	1991
Laois	13.4	6.3	-0.1	13.5	-1.8	-0.6	-0.1

Existing Service Provision

There are four different types of pre-school childcare services:

- ❑ Sessional services; (playgroups, crèches, Montessori groups, playschools, naíonra);
- ❑ Full day care: (often provided as day nurseries, crèches, etc.);
- ❑ Childminders: (children cared for in the childminder’s own home)¹; and
- ❑ Drop-in Centres: (often provided in shopping centres, leisure centres, hotels).

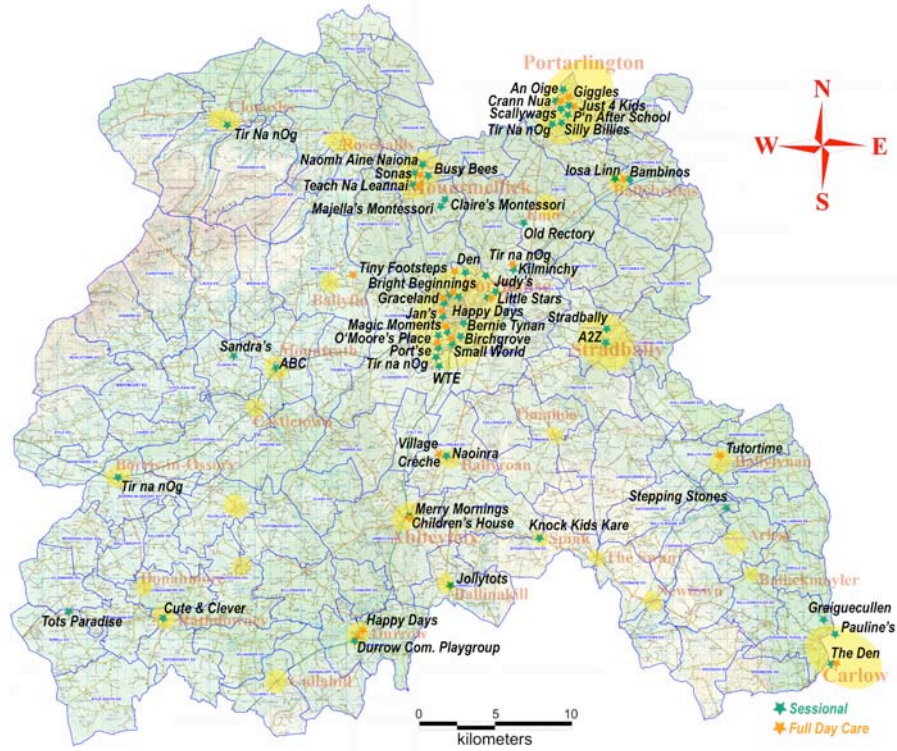
A list of all preschools notified to the HSE under the 1997 Pre-School Regulations is carried in Appendix 2. Of these 66 providers, 58 (88%) responded to the call for information from Laois County Childcare Committee in the period April-May 2006.

On the basis of the population projections provided in the latter part of this report it is estimated that there are currently in the region of 3,100 children in the age range 0-2 years, with a further 2,050 aged between 3-4 years and 1,900 in the age range 5-6 years.

¹ Only childminders caring for more than 3 children are covered by the Child Care Act, 1991

Current notified pre-schools provide approximately 204 places for the 0-2 years cohort, 734 places for those aged 3-4, and 437 places for the 5-6 years of age group.

Figure 6 – Geographic Distribution of Survey Respondents



The HSE Register records the following additional service providers to those indicated above.

Figure 7 – HSE Notified Additional Providers

Ref.	Name	Location	Service Type	Category
1	Jelly Tots	Abbeyleix	F.D.C. and Sessional	Community
14	Tir na nOg,	Borris-in-Ossory	Sessional	Private
23	Realtogi Townspark,	Borris-in-Ossory	F.D.C. and Sessional	Private
16	Melanie Crèche	Carlow	F.D.C. and Sessional	Private
54	Stella's Playschool	Castletown	Sessional	Private
60	Tots Paradise	Errill	Sessional	Community
25	Dome Pre-school,	Graigucullen	Sessional	Private
39	The Ferns Play School	Portarlington	Sessional	Private
4	Magic Moments Childcare Services	Portlaoise	Sessional	Private
43	Darling Buds Montessori & Day-care	Portlaoise	F.D.C. and Sessional	Private
53	Presentation Sisters Playschool	Portlaoise	Sessional	Community
57	PCAP	Portlaoise	Sessional	Community
58	Rise and Shine	Portlaoise	Sessional	Private
59	National Association for Parent Support	Portlaoise	Sessional	Community
62	Wee Wonders Crèche	Portlaoise	F.D.C.	Private
64	Rathdowney Montessori School	Rathdowney	Sessional	Private

Where F.D.C = Full day Care

From the above it can be seen that some rural parts of the county are poorly served by Childcare service providers.

iii Recommendations by Defined Area

Portlaoise Area

Portlaoise Electoral Area is located central to the county.

Figure 8 – Portlaoise Electoral Area

	Population 2002	% Population Change 1996-2002	Total Households 2002	Females Aged 15 to 44 2002	Pop Aged 0 - 2 Years 2002	Lone Parents All Children < 15 Years 2002
Portlaoise	16,193	19.3	5,006	3,673	903	237

The 2002 Census of Population records an increase of 19.3% over the 1996 census figure for the area. This is almost twice the increase of 11% for the county during the same period. The population estimate for 2006 is 18,400 persons (13.6% growth over the period).

The largest town in the area is Portlaoise with a population of 12,127 in 2002 (CSO – Population Classified by Area 2002). This represents an increase of 28% over the 1996 census figure. It is estimated that the population in 2006 is 14,000 people.

Portlaoise Area Childcare Capacity

From the returns of the providers’ survey, there were 19 respondents from Portlaoise, being an increase of 2 over the figure from the 2004 survey. These notified Childcare Providers account for 17 sessional services and 9 full day care services. This represents a sessional service increase of 63%, and full day care service increase of 12% over the 2004 position.

The survey reveals that a total of 596 children are registered for these services. Respondents confirmed that there were some 138 children on service waiting lists.

Figure 9 – Portlaoise Area Current Childcare Attendees

Service	0-1 YoA	1-2 YoA	2-3Yoa	3-4YoA	4-6YoA	6-8YoA	8-10YoA	10-12YoA	Total	Waiting List
Totals	26	55	96	245	133	39	3	10	596	138

The majority of respondents noted that they were operating at or near their maximum capacity.

From the survey it is noted that there was 1 childcare attendee per 29 head of population in the defined Portlaoise area.

Portlaoise Area Travel Distance

39 families are recorded as using the Childcare services that are travelling 16 or more kilometres, suggesting significant daily commuting journeys. A further 39 families are reported to travel between 8-16 km. to use the services. 47% of the service users are noted as travelling less than 1.6 km.

Portlaoise Area Development Potential

- ❑ Portlaoise is the county town of Laois, located on the M7 motorway from Dublin in proximity to the junction of the M7 and M8.
- ❑ The central location of the town has resulted in it being designated as a transport hub and inland port in the National Spatial Strategy.
- ❑ It is located to the north of the county, and is 80 km. from Dublin, 32 km. from Tullamore, 35 km. from Carlow and 48 km. from Kilkenny.
- ❑ Portlaoise is the largest source of non-agricultural employment within the County and has a significant service sector with employment in local government, decentralised central government, Department of Justice, Equality and Law Reform, E.S.B., Eircom, An Post and Health Service Executive.

- ❑ The town has experienced considerable growth and development in the last five years. This growth manifests itself in a buoyant housing market with private residential development taking place throughout the town. The population of the town in 1996 was 9,814 persons, which represented a 9% increase on the 1991 population. The town’s population in 2002 was 12,127, which indicated a growth of 28%. Present projections indicate a continuation of this rapid growth with concomitant spin-off effects on employment in the service, commercial and industrial sectors.

Opportunity/Strengths:

- ❑ Strategic Geographical Location;
- ❑ Highest rate of population growth (19.3%) of the five county EDs;
- ❑ Extensive National Rail/Commuter Linkages;
- ❑ Administrative and Local Government Centre of the County;
- ❑ Active Community/Business Groups;
- ❑ Secure and expanding service employment base; *and*
- ❑ Strong commercial/business core.

Constraints/Weakness:

- ❑ Lack of National Spatial Strategy designation;
- ❑ Inland county/dilution flows;
- ❑ Low manufacturing base; *and*
- ❑ Lack of urban focus in Portlaoise town.

Portlaoise Area Recommendations

- ❑ The projected continuation of the population expansion in the greater Portlaoise area, fuelled by commuting proximity to metropolitan Dublin, and general state growth will result in continuing demand for Childcare services.
- ❑ At the existing rate of provision of 1 Childcare attendee per 29 head of population, Portlaoise is likely to require the generation of an additional minimum of 50 places per annum for the next three years to meet the projected demand.
- ❑ The current average number of attendees is 28 per provider, suggesting that a minimum average of two new service providers per annum will be required to enter the local market.
- ❑ Based on the survey returns many existing providers appear to be operating at near-to their current capacity.
- ❑ Community-based provision making accessible childcare available to all families.

Mountmellick Area

Mountmellick Electoral Area is located in the northwest of County Laois.

At the time of the 2002 census, there was a population of 8,489 in the defined Mountmellick area, representing an increase of 10.1% over the 1996 Census of Population figure, and was tracking that of the County for the period.

Figure 10 – Mountmellick Electoral Area

	Population 2002	% Population Change 1996-2002	Total Households 2002	Females Aged 15 to 44 2002	Pop Aged 0 - 2 Years 2002	Lone Parents All Children < 15 Years 2002
Totals	8,489	10.1	2,671	1,764	395	81

The Largest town in the area is Mountmellick, with a population of 2,325 in 2002. Mountmellick returned a particularly low Relative Affluence/Deprivation Score, as did Clonaslee, Castlecuffe, Capard and particularly Brisha.

Mountmellick Area Childcare Capacity

Seven Notified Pre-School Providers who responded to the Laois Childcare Committee survey are providing sessional services, and two are providing full day care (one provider offers both services).

Figure 11 – Mountmellick Area Current Childcare Attendees

Service	0-1 YoA	1-2 YoA	2-3YoA	3-4YoA	4-6YoA	6-8YoA	8-10YoA	10-12YoA	Total	Waiting List
Totals	8	18	7	138	4	12	4	3	194	68

A total of 194 children are registered as attending the services, this being a 63% increase in the numbers attending over the 119 children registered in 2004. There are some 68 children registered on waiting lists held by the providers.

The ratio of childcare service attendees per head of population for the area is 1:43.

Mountmellick Area Travel Distance

49% of families availing of Childcare services in the defined Mountmellick area are travelling between 1.6 and 5 km. In direct contrast with the Portlaoise area, there are no long-distance commuting families, reflecting the fact that Mountmellick area is not attracting families involved in commuting over distance to work.

Mountmellick Area Development Potential

- ❑ The eastern segment of the Mountmellick area (Graigue, Mountmellick Urban and Rural, and Old Moore’s Forest EDs) falls within the high development stress zone identified by Laois County Council.
- ❑ The western segment (Castlecuffe, Clonaslee and Tinnahinch EDs) are located on rising ground forming the slopes of the Slieve Bloom Mountains, and are defined by low development stress. They also fall outside any of the main county transport corridors. Whilst Castlecuffe enjoyed a 16% population increase in the 1996-2002 period, transport infrastructure is likely to limit population growth in these areas.
- ❑ Ballyfin, Clonaslee, and Rosenallis are all noted as having some limited housing growth potential.
- ❑ Mountmellick Urban and Rural indicated some population growth during the last inter-censal period, but this fell below the county rate. Mountmellick is some 11 km. from Portlaoise. If the latter continues to grow its employment and service-centre base at its current rate, then it is reasonable to assume that Mountmellick will become attractive as a satellite to the county capital.

Opportunity/Strengths:

- ❑ Proximity of Mountmellick to Portlaoise for employment and services;
- ❑ 75% increase in Childcare providers over those identified in the 2004 survey;
- ❑ Significant increase in inter-censal period population in Dangans ED; *and*
- ❑ Largely rural societal structures.

Constraints/Weakness:

- ❑ Weak employment base;
- ❑ Topographical constraints;
- ❑ Infrastructural (transport) constraints;
- ❑ Declining population (1996-2002) in three DEDs (Graigue, Meelick and Rearymore);
- ❑ Weak support services; *and*
- ❑ Six service providers are located in Mountmellick town, with only one in Clonaslee. No Notified Providers are located to the north or south of the area.

Mountmellick Area Recommendations

- ❑ The projected continuation of employment expansion in Portlaoise will result in continuing demand for Childcare services in the Mountmellick Area.
- ❑ At the existing rate of provision of 1 Childcare attendee per 42 head of population, Mountmellick area is likely to require the generation of an additional minimum of 30 places per annum for the next three years to maintain the current service level. Based on the survey returns many existing providers appear to be operating at near-to their current capacity. There is also continuing clear evidence of under-provision in the north and south of the area, suggesting that the actual additional number of required places per annum be closer to 50.
- ❑ The current average number of attendees is 28 per provider, suggesting that a minimum average of two new service providers per annum will be required to enter the local market.
- ❑ Develop Mother and Toddler and/or Parents’ groups in Rosenallis, which can contribute to the development of a parents’ network or forum.

- ❑ Monitor the development of full day places in Mountmellick town, with a view to assessing whether they fulfil current demands.
- ❑ Strengthen and increase the professionalism of Childminding throughout the Mountmellick Electoral area, especially in the more rural areas, by providing support and training targeted at parents, with the ultimate aim of increasing the number and quality of notified childminder baby, toddler and after-school places. This might run in parallel with the development of Mother and Toddler groups/Parent groups in Rosenallis.

Borris-in-Ossory Area

Borris-in-Ossory defined area is located in the southwest of County Laois.

The National Transport Corridor of the N7 crosses the northern half of the area, with the N8 National Transport Corridor crosses to the south. The mainline Dublin-Cork rail artery bisects the defined area in a southwest direction.

Figure 12 – Borris-in-Ossory Electoral Area

DED	Population 2002	% Population Change 1996-2002	Total Households 2002	Females Aged 15 to 44 2002	Pop Aged 0 - 2 Years 2002	Lone Parents All Children < 15 Years 2002
Totals	15,862	4.5	5,164	3,105	651	149

At the time of the 2002 Census of Population there were 15,862 people living in the Borris-in-Ossory defined area, representing an increase of 4.5% over the 1996 census figure, significantly lower than the population increase of 11% for the county.

Abbeyleix recorded a population of 2,379 in 2002, an increase of 9.9% over the 1996 census figures. Mountrath had 1,896 residents in 2002, representing an increase of 4.8% on the 1996 equivalent, whilst Rathdowney recorded a population of 1,285, reflecting a 0.8% increase on the 1996 figures.

Childcare Capacity

Figure 13 – Borris-in-Ossory Current Childcare Attendance

Service	0-1 YoA	1-2 YoA	2-3YoA	3-4YoA	4-6YoA	6-8YoA	8-10YoA	10-12YoA	Total	Waiting List
Totals	6	13	44	70	84	1	1	1	220	53

Respondents to the Laois County Childcare Committee survey identified that a total of ten providers were catering for 220 places across the defined Borris-in-Ossory area. This equates to the provision of 1 space per 72 head of population. The HSE register of Notified Providers identified a further six service providers in the area who did not respond to the survey. It is estimated, therefore, that the provision rate may be 1 space per 40 head of population.

Seven of the respondents are providing sessional sessions, with a two providing a full day service. Of these, two providers were offering both sessional and full day services.

Borris-in-Ossory Area Travel Distance

Of the respondents to the survey, it was noted that 1% of families were travelling over 16 km to use the service. The majority (52%) are travelling between 1.6 and 5 km to use the services.

Borris-in-Ossory Area Development Potential

- ❑ The relatively large Borris-in-Ossory area (population size nearly equalling that of Portlaoise Area) is defined by low development stress.
- ❑ The area incorporates the settlements of Abbeyleix, Ballinakill, Borris-in-Ossory, Durrow, Mountrath and Rathdowney.
- ❑ Inter-censal period population growth across the area generally falls below that which was experienced in the county, with 27% of the 37 DEDs indicating a population decline.
- ❑ Abbeyleix is located 15 km. from Portlaoise, and is noted as experiencing development pressure that is constrained by residential planning policy.
- ❑ Ballinakill, Borris-in-Ossory, and Rathdowney are all noted as having some limited housing growth potential.
- ❑ The southeast zone of the Borris-in-Ossory Area is noted as coming under moderate development pressure.
- ❑ The M7/M8 interchange at Togher close to the Laois/Kilkenny county boundary will by-pass Mountrath and Borris-in-Ossory on the N7 and Abbeyleix, Durrow and Cullahill on the N8. This is likely to have the impact of

increasing accessibility to the southwest of the county, potentially generating additional commuting journeys to and from metropolitan Dublin.

Opportunity/Strengths:

- ❑ Improving transport infrastructure facilitating access to Portlaoise and beyond for employment and services;
- ❑ M7/M8 interchange to create area-based employment opportunities; *and*
- ❑ Relatively well-developed services infrastructure and settlement structures.

Constraints/Weakness:

- ❑ Lowest rate of population growth during the past inter-censal period of the five county EDs;
- ❑ Topographical constraints to the north of the area; *and*
- ❑ Declining population (1996-2002) in three DEDs (Castletown, Cuffsborough, Arderin, Clonin, Coolrain, Trumra, Clonmore, Kyle, Kyle South, and Moneenalassa).

Borris-in-Ossory Area Recommendations

- ❑ The M7/M8 interchange between Borris-in-Ossory and Abbeyleix will create the medium-term prospect of greater population expansion in the area.
- ❑ At the estimated existing rate of provision of 1 Childcare attendee per 40 head of population, Borris-in-Ossory area is likely to require the generation of an additional minimum of 30 places per annum for the next three years to maintain the current service level. Based on the survey returns many existing providers appear to be operating at near-to their current capacity.
- ❑ The current average number of attendees is estimated to be 28 per provider, suggesting that a minimum average of one new service provider per annum will be required to enter the local market.
- ❑ Explore with Erkina Development Association and Muintir na Tíre Ballaghmore, the feasibility of a preschool/Naionra in or near their respective catchment areas.
- ❑ Explore with existing providers the feasibility of increasing full day places in Mountrath and Abbeyleix, through the development of crèche places, or childminder networks.
- ❑ Strengthen and increase the professionalism of Childminding throughout the Borris-in-Ossory Electoral Area, especially in more rural areas, by providing support and training targeted at parents, with the ultimate aim of increasing the number and quality of notified childminder baby, toddler and after-school places. This might run in parallel with the development of Mother and Toddler groups/Parent groups in Abbeyleix.
- ❑ Explore within the DED the development of a community-based service.

Luggacurren Area

The defined Luggacurren area is located in the southeast of County Laois.

No National Transport Corridors or rail lines traverse area, although the main Dublin-Waterford rail line skirts the eastern boundary.

At the time of the 2002 census, there was a population of 8,876 in the Luggacurren area. Luggacurren, the largest settlement, has a population of less than 300 people.

The southernmost DEDs form the hinterland of Carlow Town, which had a population of 13,218, recorded in the 2002 Census of Population. Strong population growth is likely to continue in Carlow Town and environs for the foreseeable future, driven by proximity to greater Dublin. The DEDs situated in the eastern fringes of the Luggacurren area border Athy, which had a population of just over 6,000 at the 2002 census. The DEDs of Graigue Rural, Tankardstown, Ballyadams and Barrowhouse are growing at a faster rate than the county average due to their proximity to centres of population.

Figure 14 – Luggacurren Electoral Area

DED	Population 2002	% Population Change 1996-2002	Total Households 2002	Females Aged 15 to 44 2002	Pop Aged 0 - 2 Years 2002	Lone Parents All Children < 15 Years 2002
Totals	8,876	12.2	2,727	1,940	383	75

Luggacurren Area Childcare Capacity

Figure 15 – Luggacurren Area Current Childcare Attendance

Service	0-1 YoA	1-2 YoA	2-3YoA	3-4YoA	4-6YoA	6-8YoA	8-10YoA	10-12YoA	Total	Waiting List
Totals	0	0	5	106	108	14	45	7	287	69

There are six Childcare Providers in Luggacurren who responded to the Laois County Childcare Committee survey. Three of these are located in the relatively densely populated Graigue Rural DED, which borders Carlow Town.

All of the service providers are providing sessional services, and one (The Den) is also providing full day service.

A total of 287 attendees are recorded, equating to a provision of 1 space per 30 head of population.

Luggacurren Area Travel Distance

Of the respondents to the survey, it was noted that only one family was travelling over 16 km to use the service. 36% of service users are travelling less than 1.6 km to avail of the services.

Luggacurren Area Development Potential

- ❑ The Luggacurren Area comprises of zones of high development stress to the north and south. The latter is driven by the proximity to Carlow town, whilst the former is driven by the sphere of influence of Portlaoise, Portarlinton and on to metropolitan Dublin.
- ❑ The area has no settlement of significant population size.
- ❑ The area incorporates the western peri-urban Carlow town area defined by Graigue Rural DED, which has the highest concentration of population. The DED also showed the greatest inter-censal period population increase at almost double the area rate of expansion.
- ❑ Ballylinan, The Swan, and Timahoe are all noted as having some limited housing growth potential.
- ❑ The National Transport Corridor from Tullamore to Waterford, and on to Rosslare, cuts through the area, linking with Portlaoise, and Carlow town.
- ❑ Rathaspick, Shrulle and Doonane, are noted as being particularly disadvantaged.

Opportunity/Strengths:

- ❑ Proximity of Portlaoise and Carlow town for employment and services;
- ❑ Significantly increase in inter-censal period population in Ballyadams, Tankardstown, and Graigue Rural ED; *and*
- ❑ National Transport Corridor passes through the area creating future employment potential and ensuring adequate road linkage with Portlaoise and Carlow town.

Constraints/Weakness:

- ❑ Weak internal employment base;
- ❑ Declining population (1996-2002) in seen DEDs (32% of total number); *and*
- ❑ Service providers are not dispersed evenly across the area.

Luggacurren Area Recommendations

- ❑ The National Transport Corridor, and associated designation of Portlaoise as an inland port, will serve to ensure employment generation in the proximity of the Luggacurren area. The Corridor will ensure easy access to Portlaoise and Carlow town.
- ❑ Carlow town enjoyed a significant population growth of 12.8% in the intern-censal period 1996-2002. It is likely that this will continue, given its good infrastructure and proximity to metropolitan Dublin.
- ❑ At the estimated existing rate of provision of 1 Childcare attendee per 32 head of population, Luggacurren area is likely to require the generation of an additional minimum of 20 places per annum for the next three years to

maintain the current service level. Based on the survey returns many existing providers appear to be operating at near-to their current capacity.

- ❑ The current average number of attendees is estimated to be 55 per provider, suggesting that a minimum average of one new service providers per annum will be required to enter the local market.
- ❑ Develop Mother and Toddler groups in Killeen, Barrowhouse and Graiguecullen, especially where these can contribute to the development of parents' networks or fora.
- ❑ Strengthen childminding throughout the Electoral Area, especially in the more rural areas by providing support and training aimed at parents, with the ultimate aim of increasing the number and quality of notified childminder baby, toddler and after-school places.

Emo Area

Emo Electoral Area contains thirteen DEDs located in the northeast of County Laois.

The National Transport Corridor of the N7 and Dublin-Cork rail line run through the area in a south-westerly direction heading to Portlaoise, while the Dublin-Galway line passes through Portarlinton.

At the time of the 2002 census, there were 9,339 people living in the defined Emo area, representing an increase of 14.34% on the 1996 population; and exceeding the county population increase of 11%. Stradbally had a population of 1,634 in 2002.

Portarlinton had a population of 3,263 in 2002, an increase of 633 from the 1996 population census. The population of Portarlinton is likely to continue increasing, as transport links improve between Dublin and neighbouring Kildare.

Stradbally is relatively disadvantaged, whilst Jamestown and Moyanna are relatively affluent.

Figure 16 – Emo Electoral Area

DED	Population 2002	% Population Change 1996-2002	Total Households 2002	Females Aged 15 to 44 2002	Pop Aged 0 - 2 Years 2002	Lone Parents All Children < 15 Years 2002
Totals	9,354	14.5	2,988	2,063	486	92

Emo Area Childcare Capacity

Figure 17 - Emo Area Current Childcare Attendees

Service	0-1 YoA	1-2 YoA	2-3YoA	3-4YoA	4-6YoA	6-8YoA	8-10YoA	10-12YoA	Total	Waiting List
Totals	4	12	49	117	102	12	20	14	330	83

Ten Notified Childcare Providers were identified in the described Emo area in the 2004 survey, with a total of 182 children registered and attending, and a further 58, predominantly 3 year olds, on waiting lists. Thirteen respondents were recorded in the 2006 survey, with 330 children attending the services. This equates to a provision of 1 per 28 head of population of the area.

Thirteen providers are recorded as providing sessional services, with five full day services. Four of the providers are providing both sessional and full day services.

Emo Area Travel Distance

Of the respondents to the survey, it was noted that the majority (56%) are travelling between 1.6 and 5 km to use the services.

Emo Area Development Potential

- ❑ The Emo Area comprises entirely of a zone of high development stress. This is driven by the proximity to Portlaoise town, Portarlinton and on to metropolitan Dublin.
- ❑ Portarlinton offers both motorway and rail interchange.
- ❑ The area incorporates the southern urban Portarlinton town area defined by Portarlinton South DED, which has the highest concentration of population of the area. The DED also showed the greatest inter-censal period population increase at 24%.
- ❑ The area has the second highest rate of population increase (14.5%) of the five county EDs.

- ❑ Emo, Stradbally and Vicarstown are all noted as having some limited housing growth potential.
- ❑ The M7/8 corridor from Dublin to the south and southwest cuts through the area.
- ❑ Stradbally is noted as being relatively disadvantaged.

Opportunity/Strengths:

- ❑ Proximity of Portlaoise and Portarlinton for employment and services;
- ❑ Stradbally has been designated as a 'service town' in the Midlands Regional Planning Guidelines;
- ❑ Significantly increase in inter-censal period population in Portarlinton South and Sallyford EDs;
- ❑ Only 15% (2) DEDs indicating population decline in the past inter-censal period;
- ❑ M7/M8 corridor passes through the area creating future employment potential and ensuring adequate road linkage with Portlaoise, Portarlinton and beyond; *and*
- ❑ Mainline rail corridor passing through Portarlinton.

Emo Area Recommendations

- ❑ The strong transport infrastructure and associated designation of Portlaoise as an inland port, will serve to ensure employment spin-off generation in the Emo area.
- ❑ Portarlinton enjoyed a significant population growth of 24% in the inter-censal period 1996-2002. It is likely that this will continue, given its good infrastructure and proximity to metropolitan Dublin, Kildare and Portlaoise.
- ❑ At the estimated existing rate of provision of 1 Childcare attendee per 28 head of population, the Emo area is likely to require the generation of an additional minimum of 25 places per annum for the next three years to maintain the current service level. Based on the survey returns many existing providers appear to be operating at near-to their current capacity.
- ❑ The current average number of attendees is estimated to be 25 per provider, suggesting that a minimum average of one new service providers per annum will be required to enter the local market.
- ❑ As a follow-on with these participants and in partnership with the County Enterprise Board or Barnardo's, as appropriate, promote the development of a realistic business plan/feasibility study for Community or Private Full Day care.
- ❑ Develop Mother and Toddler groups in Emo, Ratheniska and Vicarstown with a view to initially developing a community playgroup.
- ❑ Strengthen Childminding in all of these areas by providing support and training aimed at parents (rather than directly at Childminders), to increase notified childminder places, including full day and flexible or sessional places, for babies, pre-school age children and school age children.
- ❑ Proactively target areas of low childcare provision within the DED for the development of services.

1 Introduction

Laois County Childcare Committee (LCCC) was established in 2001, and was incorporated in February 2002.

LCCC aims to develop a co-ordinated approach to delivering high-quality childcare services within County Laois through the identification of the communities needs, and addressing these needs.

The Committee is funded through the Department of Justice, Equality and Law Reform, as part of the National Development Plan 2000-2006, under EU structural funding.

LCCC are currently operating under the terms of the Laois County Childcare Plan 2002 - 2006. This report is designed to update the information contained in the LCCC document '*Childcare in Laois 2004 – Needs Analysis*', and provides baseline information for the framing of the 2006-2010 County Childcare Plan.

1.1 Report Scope

In the Budget 2006, the Government announced the establishment of the *National Childcare Investment Programme 2006 -2010* (NCIP), under the Office of the Minister for Children (OMC), as a successor to the earlier Equal Opportunities Childcare Programme.

Using research, analysis and evaluation tools, this report strategically maps childcare gaps and needs in the county. Based on this information it is anticipated that LCCC will be able to proactively identify and target areas for support under the NCIP.

1.1.1 Focus

The report provides the following specific information: -

- a) Analysis of the current childcare provision pattern across the county;
- b) An analysis of secondary data sources, including Gamma² Statistics, Laois County Development Plan, households surveys and information from the County Council on planning and zoning to take into consideration proposed/projected areas of population; *and*
- c) An analysis of relevant group consultations carried out by LCCC.

² Commissioned by Pobal (formerly Area Development Management Limited).

2 Pre-School Childcare Provision

2.1 Legislative Framework

Under the Child Care Act, 1991 the Health Services Executive (HSE) is charged with ensuring the health, safety and welfare of pre-school children attending services.

Pre-school children are defined by law as '*children under 6 years of age, who are not attending a national school or equivalent*'.

Pre-school services are also defined as '*any pre-school, play group, day nursery, crèche, day care or other similar service catering for pre-school children*'.

2.1.1 Childminding Tax Relief

Childminding tax relief was introduced in the Budget 2006. This applies to people who mind up to three children in the minder's own home. No tax is payable on their childminding earnings provided the earnings are less than €10,000 per annum. If the earnings exceed this amount tax is payable on the full amount. Childminders must notify their local County Childcare Committee that they are providing a childminding service.

2.1.2 Types of Childcare Services

There are four different types of pre-school childcare services:

- Sessional services; (playgroups, crèches, Montessori groups, playschools);
- Full day care: (often provided as day nurseries, crèches, etc.);
- Childminders: (children cared for in the childminder's own home)³; *and*
- Drop-in Centres: (often provided in shopping centres, leisure centres, hotels).

Additionally, services such as Naíonra's and School Age Childcare (SAC) are to be found, although SAC provision is not governed by the Pre-School regulations.

Sessional Services

Playgroups, crèches, Montessori groups, playschools, etc. offer sessional pre-school services. Services normally offered are planned programmes, consisting of up to 3.5 hours per session (i.e., a morning, afternoon, etc.). Generally, children catered for, include those in the 2-6 years age bracket. Younger children may also be catered for.

Full Day-Care

This is structured day care service for more than 3.5 hours per day. Providers can include day nurseries, crèches, etc.

Childminders

Childminders care for children in the childminder's own home. Throughout the year, they offer this service for the full working day or for different periods during the day. Parents and childminders negotiate their own terms; hours, rates, duties, etc.).

Drop-in Centres

Majority of drop-in centres cater for children over 2 years of age.

2.2 Current Childcare Provision

A list of all preschools notified to the HSE under the 1997 Pre-School Regulations is carried in Appendix 2. Of these 66 providers, 58 (88%) responded to the call for information from Laois County Childcare Committee in the period April-May 2006.

³ Only childminders caring for more than 3 children are covered by the Child Care Act, 1991

Figure 18 – Laois Childcare Service Providers – Enrolment

Ref.	Service	Location	0-1 Yoa	1-2 Yoa	2-3Yoa	3-4Yoa	4-6Yoa	6-8Yoa	8-10Yoa	10-12Yoa	Total	Waiting List ⁴
1	Merry Mornings Pre School	Abbeyleix				6	19				25	27
2	The Children’s House Childcare Centre	Abbeyleix	3	7	17	18	3	1	1	1	51	
3	Tiddlywinks Playschool & Crèche	Athy	3	2		26					31	20
4	Jollytots Community Playgroup	Ballinakill				18					18	
5	An Tigh Sugradh Naionra	Ballinmosse				5	5				10	9
6	Bambino's	Ballybrittas	2	2	3	4	3	2	4		20	1
7	Iosa Linn	Ballybrittas				15					15	
8	Tiny Footsteps	Ballyfin				1	23				24	11
9	Tutortime Playschool & After School	Ballylinan				17	28				45	45
10	Naionra	Ballyroan				7					7	6
11	The Village Crèche	Ballyroan	4	8	10	10					32	5
12	Ti r na nOg Play School	Borris-in-Ossory				16					16	12
13	Happy Days Pre School	Borris Little, Portlaoise				35					35	35
14	Ti r na nOg Play School & After School Club	Clonaslee				28	3	7	4	3	45	27
15	Happy Days Montessori School	Clough Ballacolla			1	13	3				17	14
16	Pauline's Play Group	Crossneen, Co. Carlow			2	12	9				23	
17	Durrow Community Playgroup	Durrow				8	18				26	15
18	Happy Days Crèche	Durrow	3	6	6	8	8				31	4
19	The Old Rectory Playschool	Emo				5	24				29	
20	Graiguecullen Parish Child Care Centre	Graiguecullen				30	23	10	15	5	83	
21	The Den	Killeshin, Co. Carlow			3	29	28		30		90	20
22	Little Stars Crèche & Montessori School	Kilminchy Village, Portlaoise	6	6	12	31		7	4	1	67	
23	Busy Bee's Playschool & Child minding	Mountmellick		3	4	3	1				11	10
24	Claire’s Montessori Pre-School	Mountmellick				22					22	13
25	Majella's Montessori School	Mountmellick				25					25	
26	Naomh Aine' Naionra	Mountmellick				36					36	
27	Sonas Mountmellick Community Childcare	Mountmellick	8	11		30		5			54	20
28	Teach Na Leannai Youth Reach	Mountmellick		4	3	1					8	
29	ABC Preschool Playgroup	Mountrath				2	10				12	
30	Sandra's Playschool	Mountrath			20						20	
31	An Oige	Portarlinton					28				28	20
32	Crann Nua	Portarlinton	2	1	8	8			2		21	
33	Giggles Crèche	Portarlinton		2	6	8	12	4			32	4
34	Just 4 Kids	Portarlinton		7	9	17	3				36	5
35	Portarlinton After School	Portarlinton						3	9	8	20	
36	Scallywags	Portarlinton			3	7	8				18	13
37	Silly Billies	Portarlinton			20						20	
38	Ti r na nOg Ballymorris	Portarlinton				6	8	3	5	6	28	14
39	Bernie Tynan's Pre-School	Portlaoise				15	15				30	
40	Birchgrove After School Programme	Portlaoise						3		9	12	
41	Bright Beginnings	Portlaoise	6	7	10	10	6	6	3	1	49	13
42	Graceland Crèche & Montessori	Portlaoise	3	12	6	11	2				34	5
43	Jan's Nursery & Playschool	Portlaoise	1	5	6	12	4				28	
44	Judy's Play school	Portlaoise				14	6				20	3
45	Kilminchy School House	Portlaoise	2	6	9	22	7	6			52	
46	Magic Moments	Portlaoise		1	5	26		13			45	4
47	O'Moore Place Childcare	Portlaoise			17		40				57	44
48	Portlaoise Crèche & Montessori	Portlaoise	4	5	10	2	3	2			26	
49	Small World	Portlaoise		5	5	10	5	5			30	
50	Stepping Stones Pre School	Portlaoise			1	11					12	4
51	The Den Playgroup	Portlaoise				11	20				31	18
52	Ti r na nOg Naionra	Portlaoise				10	18				28	16
53	Ti r na nOg Playschool	Portlaoise				16					16	
54	Tots Paradise	Portlaoise			1	7					8	7

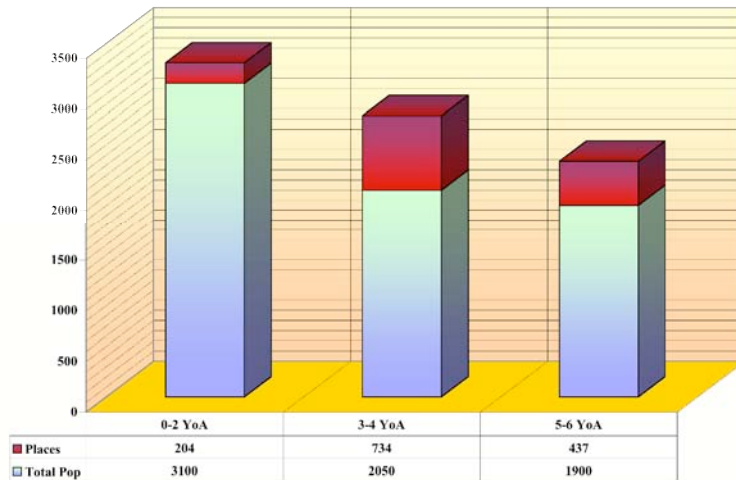
/continued

⁴ Waiting List numbers also include projected enrolment figures for period commencing September 2006.

/continued

Ref.	Service	Location	0-1 YoA	1-2 YoA	2-3Yoa	3-4YoA	4-6YoA	6-8YoA	8-10YoA	10-12YoA	Total	Waiting List ⁵
55	Working Towards Employment	Portlaoise			6	7					13	
56	Cute & Clever	Rathdowney				5	8				13	
57	Knock Kids Kare	Spink			1	7	20	4		2	34	
58	A2Z Montessori School	Stradbally				10	16				26	26
59	Stradbally Montessori Pre School	Stradbally				37					37	
	Totals		47	100	204	750	437	81	77	36	1,732	490

Figure 19 – Provision Estimate by Age Band



On the basis of projections provided in the latter part of this report it is estimated that there are currently in the region of 3,100 children in the age range 0-2 years, with a further 2,050 aged between 3-4 years and 1,900 in the age range 5-6 years. From the above returns it can be seen that current notified pre-schools provide approximately 204 places for the 0-2 years cohort, 734 places for those aged 3-4, and 437 places for the 5-6 age group.

2.2.1 Service Category

The survey of providers undertaken by Laois County Childcare Committee in April/May 2006 distinguished between the two primary types of service: sessional and full day care.

Figure 20 – Service Categories

Ref.	Provider	Location	Service	
			Sessional	Full
1	Merry Mornings Pre School	Abbeyleix	1	0
2	The Children's House Childcare Centre	Abbeyleix	1	1
3	Tiddlywinks Playschool & Crèche	Athy	1	1
4	Jollytots Community Playgroup	Ballinakill	1	0
5	An Tigh Sugradh Naionra	Ballinmosse	1	0
6	Bambino's	Ballybrittas	1	1
7	Iosa Linn	Ballybrittas	1	0
8	Tiny Footsteps	Ballyfin	1	0
9	Tutortime Playschool & After School	Ballylinan	1	0
10	Naionra	Ballyroan	1	0
11	The Village Crèche	Ballyroan	0	1
12	Tir na nOg Play School	Borris-in-Ossory	1	0
13	Happy Days Pre School	Borris Little, Portlaoise	1	0
14	Tir na nOg Play School & After School Club	Clonaslee	1	0
15	Happy Days Montessori School	Clough Ballacolla	1	0
16	Pauline's Play Group	Crossneen, Co. Carlow	1	0
17	Durrow Community Playgroup	Durrow	1	1
18	Happy Days Crèche	Durrow	0	1

/continued

⁵ Waiting List numbers also include projected enrolment figures for period commencing September 2006.

/continued

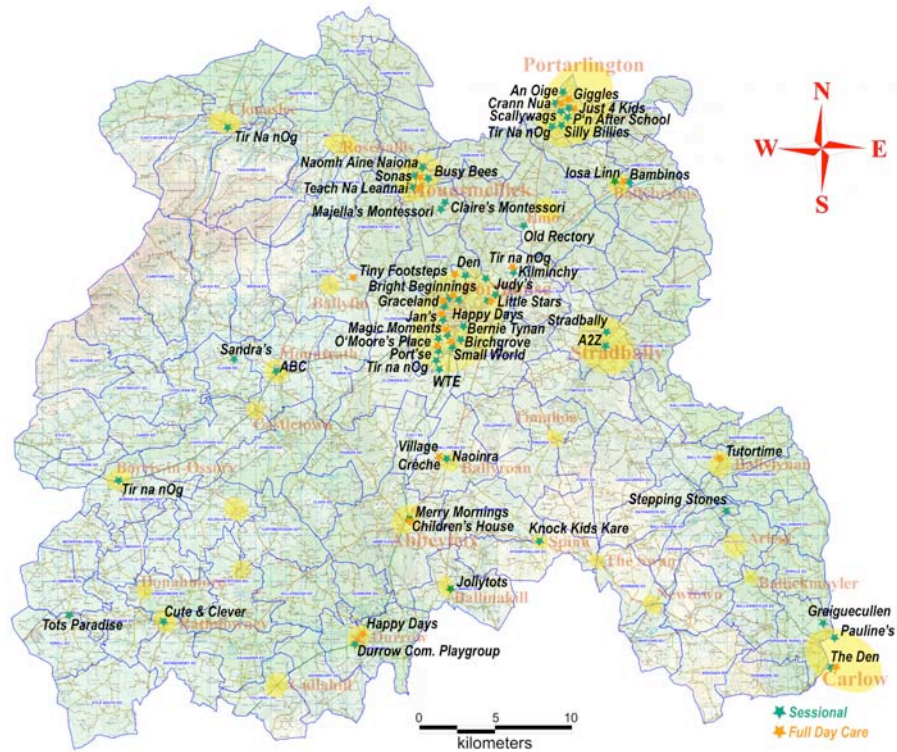
Ref.	Provider	Location	Service Sessional	Ref.
19	The Old Rectory Playschool	Emo	1	0
20	Graigucullen Parish Child Care Centre	Graigucullen	1	0
21	The Den	Killeslin, Co. Carlow	1	1
22	Little Stars Crèche & Montessori School	Kilminchy Village, Portlaoise	1	1
23	Busy Bee's Playschool & Child minding	Mountmellick	1	0
24	Claire's Montessori Pre-School	Mountmellick	1	0
25	Majella's Montessori School	Mountmellick	1	0
26	Naomh Aine' Naionra	Mountmellick	1	0
27	Soras Mountmellick Community Childcare	Mountmellick	1	1
28	Teach Na Leannai Youth Reach	Mountmellick	0	1
29	ABC Preschool Playgroup	Mountrath	1	0
30	Sandra's Playschool	Mountrath	1	0
31	An Oige	Portarlinton	1	0
32	Crann Nua	Portarlinton	1	1
33	Giggles Crèche	Portarlinton	0	1
34	Just 4 Kids	Portarlinton	1	1
35	Portarlinton After School	Portarlinton	1	0
36	Scallywags	Portarlinton	1	0
37	Silly Billies	Portarlinton	1	0
38	Tir Na Nog Ballymorris	Portarlinton	1	0
39	Bernie Tynan's Pre-School	Portlaoise	1	0
40	Birchgrove After School Programme	Portlaoise	1	0
41	Bright Beginnings	Portlaoise	1	1
42	Graceland Crèche & Montessori	Portlaoise	1	1
43	Jan's Nursery & Playschool	Portlaoise	1	1
44	Judy's Play School	Portlaoise	1	0
45	Kilminchy School House	Portlaoise	1	1
46	Magic Moments	Portlaoise	1	1
47	O'Moore Place Childcare	Portlaoise	1	0
48	Portlaoise Crèche & Montessori	Portlaoise	1	1
49	Small World	Portlaoise	1	1
50	Stepping Stones Pre School	Portlaoise	0	1
51	The Den Playgroup	Portlaoise	1	0
52	Tir na nOg Naionra	Portlaoise	1	0
53	Tir Na nOg Playschool	Portlaoise	1	0
54	Tots Paradise	Portlaoise	1	0
55	Working Towards Employment	Portlaoise	1	0
56	Cute & Clever	Rathdowney	1	0
57	Knock Kids Kare	Spink	1	0
58	A2Z Montessori School	Stradbally	1	0
59	Stradbally Montessori Pre School	Stradbally	1	0
			54	21

From the above it can be seen that 91% of the providers are supporting sessional services, with 36% providing full day care service.

2.2.3 Geographical Distribution

The above figures identify the geographical locations of the notified facilities, and the numbers currently catered for by those facilities.

Figure 21 – Physical Distribution



2.3 Parent and Toddler Groups

Laos County Childcare Committee initiated a review of Parent and Toddler Group services in the county. A summary of the findings is carried below.

2.3.1 Ballyroan

The group is in existence for four years, and they meet once a week. They have a Management Committee, and they share responsibility through a rota system.

2.3.2 Borris-in-Ossory

This group is located in the Boys School, Borris-in-Ossory. It is in operation since November 2005, and meet on a weekly basis. The benefits identified for the parents within the group include the achievement of an agreed consensus that it was a great social outlet. For children it was a great way for children to interact together and learn to share toys with one another.

There are two key members involved in the running of the group. The group is a member of the I.P.P.A., and has sought a start-up grant of €6,000 from the national lottery.

2.3.3 Clonaghadoo

This group is in operation since 2003, and meet on a weekly basis. The group is not a member of the I.P.P.A.

The gaps in provision that they have identified in the locality include: lack of crèches, and after-school and breakfast clubs. They note also that class numbers in local schools have increased dramatically in the area due to new housing developments.

2.3.4 Mountmellick

There are two groups are in operation in Mountmellick. One group has been in existence for the past 10 -11 years they meet on weekly bases. The group operates through the Church, and a fee of €2 provides for tea and biscuits. The group is a member of I.P.P.A., and has a membership and insurance fee.

Mountmellick Parent and Toddler Group has been in operation since January 2003, and holds I.P.P.A membership. Twenty children are currently enrolled, and the facility has a capacity of thirty-five.

2.3.5 Mountrath

The group meets every Tuesday, and have been in operation for the past three years. The group has a three-person executive, comprising of an organiser, secretary and an accounts person. The group is a member of the I.P.P.A., and have sought funding from the Katherine Howard Foundation.

2.3.6 Portarlinton

The Portarlinton Parent and Toddler Group have been in operation for the past five years, and meet on a weekly basis. The group has three committee members, and they hold membership of the I.P.P.A.

The group consider that there is a adequate provision of crèches in the area, although there are gaps in the availability of after-school and breakfast clubs.

2.3.7 Portlaoise

The Portlaoise group is in operation for the past 5-6 years. Six Committee Members are involved in the running of the group, which is a member of the I.P.P.A.

2.3.8 Rathdowney

Located in the Marion Centre, Rathdowney, this group meets two mornings every week. The group has committee members in place, and they share responsibilities through a rota system. The group is a member of the I.P.P.A. and has membership and pay fees for the above. The group received funding from the national lottery of €4,000 and Section 65 grant of €1,000 per year. They also received funding from the HSE. The group feels that the area needs more services, such as after school and crèche facilities.

2.3.9 Rosenallis

Clonaghadoo Parent and Toddler Group was started in 2003, and meets on Wednesdays. Local gaps have been identified in the provision of crèche facilities, together with after-school provision and breakfast clubs. The group is not affiliated to the I.P.P.A.

2.4 Primary School Provision

Children are not obliged to attend school until the age of six, however, 65% of four year olds and most five year olds are enrolled in the infant classes in primary schools in Ireland.

The primary education system emphasises a child-centred approach and the curriculum (recently completely revised) provides for an extensive learning experience and promotes a rich variety of approaches to teaching and learning.

Figure 22 – Co. Laois Primary School Provision

Ref.	Primary School	Location
1	Abbeyleix South National School	Abbeyleix
2	Cloch An Tsonnaigh National School, Foxrock, Ballacolla	Abbeyleix
3	Scoil Mhuire	Abbeyleix
4	S N Naomh Colmcille	Aireill
5	Shanganamore National School, Shanganamore	Athy , Co. Kildare
6	The Swan National School	Athy, Co Kildare
7	Faolan Naofa National School	Baile Ui Ruain
8	Naomh Pius X National School	Ballacolla
9	Ballinakill Mixed National School	Ballinakill

/continued

/continued

Ref.	Primary School	Location
10	Rath Mixed National School, Rath	Ballybrittas
11	Kiladooley Mixed National School, Kiladooley	Ballybrophy
12	Borris-In-Ossory Convent	Borris-In-Ossory
13	Muire Naofa Castlecuffe, Castlecuffe	Clonaslee
14	Our Lady's Meadow National School	Durrow
15	Emo Mixed National School	Emo
16	Fraoch Mor National School	Fraoch Mor
17	Clonaghadoo National School, Clonaghadoo, Kilcava	Geashill Co Offaly
18	S N Olaise Molaise An Cnoch	Mainistir Laoise
19	Scoil Bhríde Cluain Na Sli	Mointeach Milic
20	Barr Na Sruthan National School, Barr Na Sruthan	Mountmellick
21	Mountmellick Boys National School	Mountmellick
22	Na Carraige National School, Na Carraige	Mountmellick
23	St Josephs Girls National School, Davitt Road	Mountmellick
24	St Paul's National School, St Paul's Rectory	Mountmellick
25	Cill An Iubhair National School, Cill An Iubhair	Mountrath
26	Cluain Eidhneach National School, Cluain Eidhneach	Mountrath
27	Scoil Bhríde Still Brook	Mountrath
28	St Fintan's National School, New Line Road	Mountrath
29	Tobar An Leinn Raheen	Mountrath
30	Trummera National School, Trummera	Mountrath
31	Cul An Tsudaire National School. Cul An Tsudaire	Portarlinton
32	S N Naomh Eoin	Portarlinton
33	Camross National School, Camross	Portlaoise
34	Gaelscoil Phort Laoise	Portlaoise
35	Maryboro National School, Maryboro	Portlaoise
36	Mhuire Fatima National School, Tigh Mochua	Portlaoise
37	Paddock National School, Paddock Baile Chaisleain	Portlaoise
38	Rush Hall Mixed National School	Portlaoise
39	S N An Chroi Ro Naofa	Portlaoise
40	S N Baile Finn, Baile Finn	Portlaoise
41	S N Mhuire Presentation Convent	Portlaoise
42	Scoil Bhríde National School	Portlaoise
43	Scoil Bhríde, Ballyroan	Portlaoise
44	St Francis S S	Portlaoise
45	St. Paul's Primary School, Borris Road	Portlaoise
46	The Kolbe Special School, Block Road	Portlaoise
47	Raithin An Uisce National School	Raithin An Uisce
48	Cullohill National School	Rathdowney
49	Rathdomhnaigh National School	Rathdowney
50	Scoil Bhríde	Rathdowney
51	St Tighearnach Cullohill National School	Rathdowney
52	Naomh Padraig National School, Doire Liam Oig	Rosenallis
53	Rosenallis National School	Rosenallis
54	S N Fionntan Naofa	Shanahoe
55	Sraid Bhaile Boys National School	Sraid Bhaile
56	Cosby National School, Cosby	Stradbally
57	Stradbally Convent	Stradbally

3 Childcare Demand Determinants

Given the relatively underdeveloped nature of childcare provision in Ireland at the turn of the century and, in particular, a wide reliance on family day care and on the provision of care by family or neighbours, be they paid or unpaid, the Department of Justice, Equality and Law Reform concluded that *'it is quite difficult to assess the level of demand for childcare'*⁶.

The theoretical demand for childcare services is ultimately limited by population size, affordability of services and customer requirements. Ireland currently has the youngest population in Europe, with over 40% under the age of 25 years. This has fuelled much of Ireland's recent prosperity, and will underpin population growth in the Republic of 30% to over 5.3 million by 2020 and to six million by 2050⁷.

3.1 CSO Population Projections

Figure 23 – Regional Location



County Laois is located within the Midlands Regional Authority area, and is bounded by counties within each of the Regional Authority areas of the Mid-West, South-East and Mid-East.

The Central Statistics Office (CSO) in its report entitled *'Regional Population Projections 2006-2021'* (May 2005) suggests that the Mid-East is projected to continue to increase its population share while the West will also see its share increase. By 2021 the CSO predicts that the Mid-East will account for 12.3% of the population of the State while the West will account for 10.1% (up from 9.7% in 2002).

The Midlands are projected to show an annual rate of population increase of 1.4%, based on the CSO *'MIF2 Medium'*⁸ scenario, which largely assumes a continuation of recent demographic trends.

Figure 24 – Projected Population Change by Region 2002-2021 (CSO)

Regional Authority Area	Population 2021	Natural Increase	Internal Migration	External Migration	Population 2021	Total Increase	Average Annual Increase %
<i>Thousands</i>							
Mid-East	413	101	58	51	623	210	2.2
Midland	225	37	14	19	296	71	1.4
Mid-West	340	50	-4	24	410	70	1.0
South-East	424	59	20	35	537	114	1.3
State	3,917	633	0	520	5,070	1,153	1.4

3.1.1 Age Structure

The CSO projects that the population of those aged 0-14 years will increase in all regions between 2002 and 2021 with the rate of increase projected to taper off in the latter part of the projection period.

⁶ *'A Review of Progress to End 2003 on the Implementation of the Equal Opportunities Childcare Programme 2000 – 2006'*.

⁷ NCB Stockbrokers

⁸ M1 – Immigration continuing at a high level and then moderating; F1 – total fertility rate to increase to 2.0 by 2011, and remain constant thereafter; Medium – average of trends observed in the 1996 and 2002 Censuses applied in 2006 and kept constant thereafter.

Figure 25 – Projected Population Age Range 2001-2021 (CSO)

Age Range	0-14	15-24	25-44	45-64	65+	Total
<i>Thousands</i>						
<i>Mid-East</i>						
2001	94	65	127	82	33	401
2006	106	64	150	100	38	459
2011	121	61	167	119	48	515
2016	131	66	176	137	62	572
2021	134	77	177	157	78	623
<i>Midland</i>						
2001	51	35	63	46	26	220
2006	55	34	72	54	28	243
2011	59	32	79	61	31	262
2016	62	32	82	68	36	280
2021	61	36	81	75	43	296
<i>Mid-West</i>						
2001	72	57	95	72	39	335
2006	75	52	105	82	42	355
2011	80	46	112	90	47	375
2016	84	46	113	96	56	395
2021	84	49	109	102	65	410
<i>South-East</i>						
2001	93	65	119	90	49	416
2006	97	64	133	103	54	451
2011	103	60	142	115	61	482
2016	106	61	147	126	72	512
2021	106	65	145	137	84	537

The CSO projects that the Mid-East Region will see an increase of about one-fifth in the numbers of people aged between 15 and 24 years, with a small increase (about 4%) in the corresponding age group in the Midland region.

Major increases are projected in all regions between 2002 and 2021 for those aged 25 to 64, reflecting earlier birth cohorts joining the population of working age. Projected gains from external migration will also exert a strong influence on this age group. Of particular note is the projected almost doubling of the number of persons aged 45-64 in the Mid-East region.

The young dependency ratio (those aged 0-14 as a percentage of those aged 15-64) is projected to fluctuate but generally decline in most regions between 2002 and 2021.

3.1.2 Births

The CSO calculates the anticipated number of births in a particular period as a function of the number of women of child-bearing age (15-49 years) and the fertility levels of these women. Given that over 90 per cent of births are to women aged 20-39 years, the focus will be on this age group.

Under the *MIF2 Medium* scenario the number of births at national level is projected to rise slightly from its 2001 level of 58,000 to reach 63,000 by 2021, an increase of nearly 9%. While this scenario assumes a decline in the total fertility rate from 1.98 in 2003 to 1.85 by 2011, this decline will be counter-balanced by an increase in the number of women aged 20-39 from 595,000 in 2001 to 661,000 in 2021 (an increase of 11%).

Figure 26 – Females aged 20-39 and Total Births (CSO)

	<i>Females aged 20-39</i>		<i>Births</i>	
	<i>Thousands</i>			
	2001	2021	2001	2021
Mid-East	63	81	7	8
Midland	30	35	3	4
Mid-West	49	50	5	5
South-East	59	66	6	6
State	595	661	58	63

3.2 National Spatial Strategy Impacts

The National Spatial Strategy for Ireland 2002-2020 (NSS) is a twenty-year planning framework designed to achieve a better balance of social, economic, physical development and population growth between regions. It was published by the Government in late-2002. Its focus is on people, on places and on building communities. Through closer matching of where people live with where they work, the country will be able to sustain a better quality of life for people, a strong, competitive economic position and an environment of the highest quality.

3.2.1 Regional Population Distribution

At the time of publication of the NSS, the population of the Midland Region was estimated to be 226,000 (CSO Census of Population 2002), of which a combined population of 54,000 resided in the towns of Athlone, Mullingar, Tullamore, Longford and Portlaoise. It was estimated that this was to rise to around 280,000 in the Midlands Region by 2020 (24% increase – average 1.3% per annum).

The NSS relates population dispersion to likely housing demand over its 20-year time horizon. This provides a context for the making of regional and local plans and strategies. Under the Planning and Development Act, 2000 local authorities are required to ensure that sufficient land is zoned for housing over the period of their development plans.

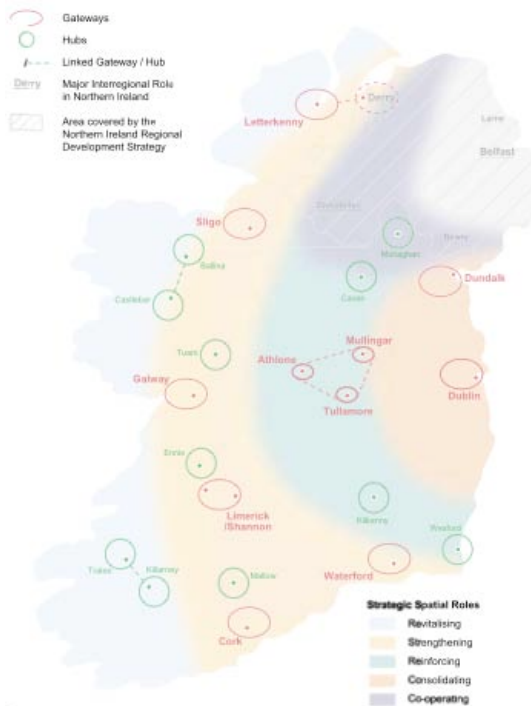
The Act dictates that good planning practice must ensure the development of land for housing and other uses in pace with the provision of the necessary amenities and services.

Figure 27 – Regional Household Distribution Estimates (NSS)

Region	1996 Households	2020 Households – Current Demographic Trends	2020 Households – Economic Growth
West	110,000	183,000	184,000
Southeast	120,000	188,000	198,000
Midwest	98,000	160,000	169,000
Midlands	62,000	90,000	113,000

3.2.2 Gateways and Hubs

Figure 28 – Gateways and Hubs (NSS)



The NSS defines a number of ‘gateways’ and ‘hubs’ as being the foci for strategic development, which will attract population growth. In the Midlands Region these are represented by the linked hub of Athlone, Mullingar and Tullamore.

County Laois is identified in the NSS as being in the ‘reinforcing’ zone. In this area the following are seen to be key considerations:

- ❑ Creation of the critical mass necessary to enhance the powers of attraction of the Midlands linked gateway (Athlone-Mullingar-Tullamore).
- ❑ Improved collaboration and joint promotion of towns.
- ❑ Capitalising on the advantages of the Midlands in terms of its central location.

3.2.3 NSS Implementation

The NSS identifies that enhancing the level of critical mass in the Midlands region (Counties Laois, Offaly, Westmeath and Longford), by combining the complementary strengths of Athlone, Mullingar and Tullamore as a gateway at the heart of the region, is essential to boosting the region’s overall economic strength. It is also considered important to build on the central location of the Midlands and the key towns at the intersection of national road and rail routes, the attractiveness of the village structure in the Midlands and the natural and other resources of more rural areas. The gateway in the region will help to position other areas to benefit from the strength of that gateway, but those other areas will need to put plans in place to ensure that this happens.

Figure 29 – Midlands Region (NSS)

The NSS suggests that the strategic positioning of Portlaoise on the national road and rail links can be enhanced in competitive terms to drive development at county level. High urban design quality, effective water services and clear local development frameworks are seen to be necessary to ensure this. It is recognised that Portlaoise, additionally, has strong national development potential as a transport hub and distribution centre or inland ‘port’ given its location on several national road and rail routes.

The NSS sees that smaller towns such as Portarlinton and Mountmellick can be enhanced through physical and townscape improvements, water services, facilities for smaller enterprises and enhancements to road and bus networks. This will offer an attractive environment for residential, employment, retailing and service functions.

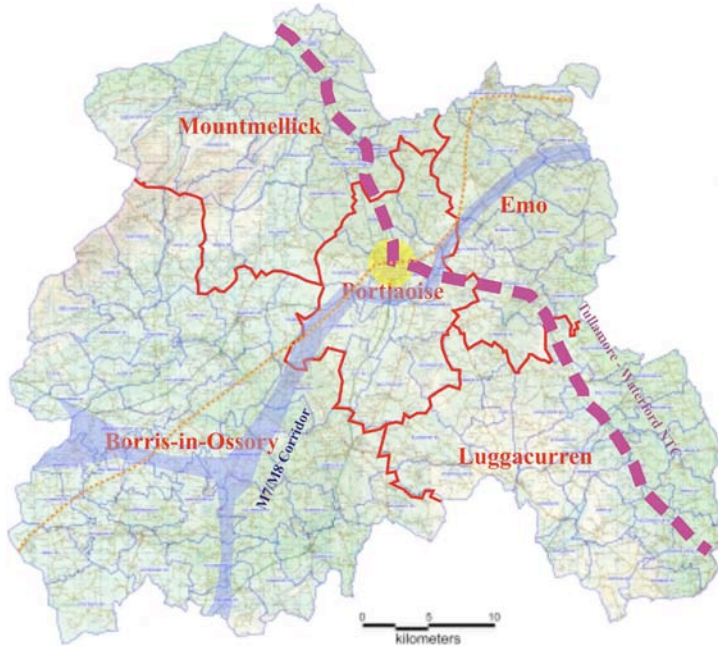
Demand for housing within easy reach of larger towns can be harnessed positively to strengthen the residential and other functions of smaller towns. The NSS notes that this can be achieved by enabling villages to attract residential and other developments through availability of land and capacity of services.



3.2.4 Development Magnets

The NSS identifies the arterial corridors passing through the county. The Dublin-Limerick -Cork M7/M8 corridor passes through the south-west of the county, with the Cork and Limerick legs converging to the east of Borris-in-Ossory.

Figure 30 – County Laois Road Network (LCDP)



Based on past experience it is reasonable to assume that this forked corridor will form a major driver for location of new development in the county, including residential. Equally, the Tullamore-Rosslare National Transport Corridor is also likely to be a driver for development, particularly to the north of the county. Just beyond the county boundary, the Dublin-Waterford National Transport Corridor will also impact on the south-east of the county.

3.3 County Laois - Gamma Profile and Projections

Pobal has commissioned Gamma Statistics to undertake an analysis of the CSO Census of Population 2002. The report, published in 2003, examines County Laois in terms of demography, economic activity, and levels of affluence and deprivation: as an individual unit: at Electoral Division (ED) level and by comparison with, the Midlands Region, and the National totals.

3.3.1 Population

The population of County Laois in 2002 was 58,774 persons, which represented an increase of 12.3% on the 1991 totals. This compares to an 11% increase over the same period in the Midlands Region.

Figure 31 – County Laois Population 1991-2002 (Gamma/CSO)

Area	Population			Males			Females		
	2002	1996	1991	2002	1996	1991	2002	1996	1991
Laois	58,774	52,945	52,314	30,131	27,160	26,904	28,643	25,785	25,410
Midlands	225,363	205,542	202,984	114,070	104,230	103,344	111,293	101,312	99,640
National	3,917,203	3,626,087	3,525,717	1,946,164	1,800,232	1,753,417	1,971,039	1,825,855	1,772,300

Population Projection

'Regional Population Projections 2006-2021' CSO (May 2005) suggests that the Midlands are projected to show an annual rate of population increase of 1.4%. Assuming that this increase is spread evenly across the area, then County Laois might benefit accordingly.

Figure 32 – County Laois Population 2002-2013

	2002	2006	2007	2008	2009	2010	2011	2012	2013
Population	58,744	62,103	62,973	63,854	64,748	65,655	66,574	67,506	68,451
Males	30,131	31,854	32,300	32,752	33,211	33,676	34,147	34,625	35,110
Female	28,613	30,249	30,673	31,102	31,538	31,979	32,427	32,881	33,341

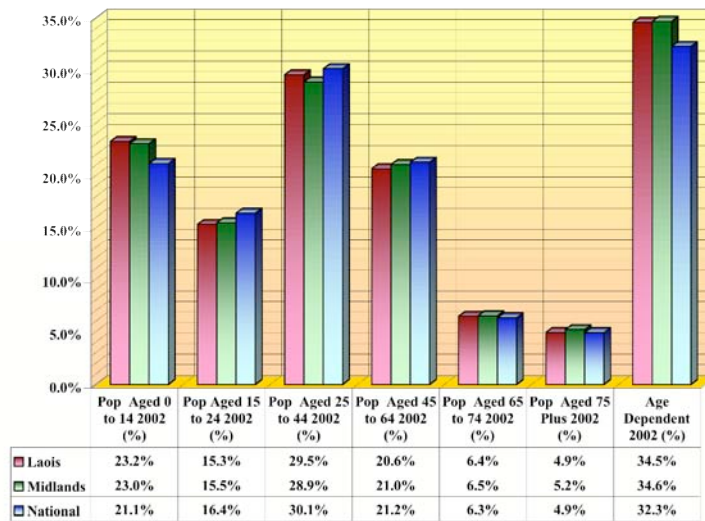
Based on this assumption it is projected that the current (2006) population of the County will be approximately 62,103 persons.

3.3.2 Age Structure

In 2002 23.2% of the population of the County was aged 14 years or under.

The age profile of the population aged less than 30 years in 2002 was 45.6%, this being marginally higher than the Midlands and the National populations.

Figure 33 – County Laois Age Structure 2002 (Gamma/CSO)



3.3.3 Household Structure

In 2002 the CSO recorded 18,556 households in the County. Gamma note that a characteristic shared by the most deprived parts of the country, but more especially to be found in urban areas, is an above average proportion of lone-parent households. In the County it was found that 4.7% of all households consisted of a lone parent with at least one child of less than 15 years of age; this was lower than the Midlands Region at 5.1%.

Figure 34 – Household Structure 2002 (Gamma/CSO)

	Total Households	Males 45 Plus Living Alone	Females 45 Plus Living Alone	Lone Parents All Children	Lone Parents All Children < 15 Years	Lone Parents at Least One Child < 15 Years
	<i>% of all Households</i>			<i>% of all Family Units</i>		
Laois	18,556	7.0%	8.4%	11.7%	3.4%	4.7%
Midlands	72,435	7.2%	8.6%	11.7%	3.7%	5.1%
National	1,287,958	6.6%	8.7%	11.9%	3.9%	5.3%

3.3.4 Household Structure Projection

Figure 35 – Household Structure Projection 2002-2013

	2002	2006	2007	2008	2009	2010	2011	2012	2013
Total Households	18,556	19,617	19,892	20,170	20,453	20,739	21,029	21,324	21,622
Males 45+ Living Alone	1,294	1,368	1,387	1,407	1,426	1,446	1,466	1,487	1,508
Females 45+ Living Alone	1,553	1,642	1,665	1,688	1,712	1,736	1,760	1,785	1,810
Lone Parents, All Children	2,164	2,288	2,320	2,352	2,385	2,419	2,452	2,487	2,522
Lone Parents, All Children < 15 years	634	670	680	689	699	709	719	729	739
Lone Parents, At Least One Child < 15 years	873	923	936	949	962	976	989	1,003	1,017

The above is based on the assumption that the annual rate of population increase of 1.4% translates approximately in a linear manner into the Household Structure.

3.3.5 Social Class Structure

The social class of all persons aged 15 and over is determined by their occupation and employment status, classified into one of the following social class groups (introduced in 1996) which are defined on the basis of occupation: -

- 1 Professional workers;
- 2 Managerial and technical;
- 3 Non-manual;
- 4 Skilled manual;
- 5 Semi-skilled;
- 6 Unskilled; *and*
- 7 All others gainfully occupied and unknown.

The population distribution in County Laois between the different social classes diverges only marginally from each other and the national profile.

The percentage of the National population in social classes 1 and 2 - Higher and Lower Professionals - was 31.6% in 2002, and in County Laois was 27.8%.

Figure 36 – Social Class Structure 2002 (Gamma/CSO)

Area	Pop 2002	Pop Social Class 1 (%)	Pop Social Class 2 (%)	Pop Social Class 3 (%)	Pop Social Class 4 (%)	Pop Social Class 5 (%)	Pop Social Class 6 (%)	Pop Social Class 7 (%)
Laois	58,774	4.1%	23.7%	17.0%	19.3%	13.2%	7.1%	15.5%
Midlands	225,363	4.3%	23.2%	16.5%	18.8%	11.8%	6.7%	18.6%
National	3,917,203	6.1%	25.5%	16.5%	17.2%	10.9%	5.6%	18.2%

3.3.6 Travel to School, Work or College

In 2002 County Laois had 36,554 persons travelling to work, school or college. The majority travelled a distance of less than 1.6 km.

Figure 37 – Commuting Distances 2002 (Gamma/CSO)

Area	Distance travelled - 0 km (%)	Distance travelled – 1.6 km (%)	Distance travelled – 3.2 km (%)	Distance travelled – .8-6.4 km (%)	Distance travelled - 8-14 km (%)	Distance travelled - 16-22.5 km (%)	Distance travelled - 24-47 km (%)	Distance travelled - 48+ km (%)	Distance travelled - Not stated (%)
Laois	5.3%	18.8%	10.5%	11.7%	16.2%	8.2%	9.1%	10.8%	9.5%
Midlands	4.6%	20.1%	10.9%	11.9%	15.2%	8.5%	8.8%	8.9%	11.1%
National	3.5%	20.5%	11.3%	14.2%	17.4%	8.9%	8.9%	4.2%	11.0%

From the above it can be seen that substantially greater numbers were commuting distances in excess of 48 km than was the case nationally.

3.3.7 Deprivation Index

The Deprivation Index (Gamma Statistics) provides a single measurement of the overall deprivation of an area. The index takes into consideration the underlying dimensions of deprivation (Social Class, Demographic and Labour Market Deprivation). The scores range from -50 to 50 with -50 being extremely deprived and 50 being extremely affluent. In 2002 the National Average Score was 17.4

Figure 38 – Affluence and Deprivation 1991-2002 (Gamma/CSO)

Area	Absolute Affluence/Deprivation Scores			Change in Deprivation Score 1991 -2002	Relative Affluence/Deprivation Scores		
	2002	1996	1991		2002	1996	1991
Laois	13.4	6.3	-0.1	13.5	-1.8	-0.6	-0.1
Midlands	14.1	6.1	-0.7	14.8	-1.1	-0.8	-0.7
National	17.4	9.1	1.9	15.4	2.2	2.2	1.9

Between 1991 and 2002 there was an improvement in the overall affluence of County Laois as there was a positive change of 13.5 in the Affluence/Deprivation Score of County Laois (-0.1 in 1991 to 13.4 in 2002). The Midlands Area improved by 14.8 in the same period.

3.4 Sub-County Profile

District Electoral Divisions (DEDs) form the smallest statistical unit for which data is supplied by the CSO. These DEDs represent the highest level of dis-aggregation of the Census data.

Figure 39 – County Laois Electoral Divisions (Gamma)

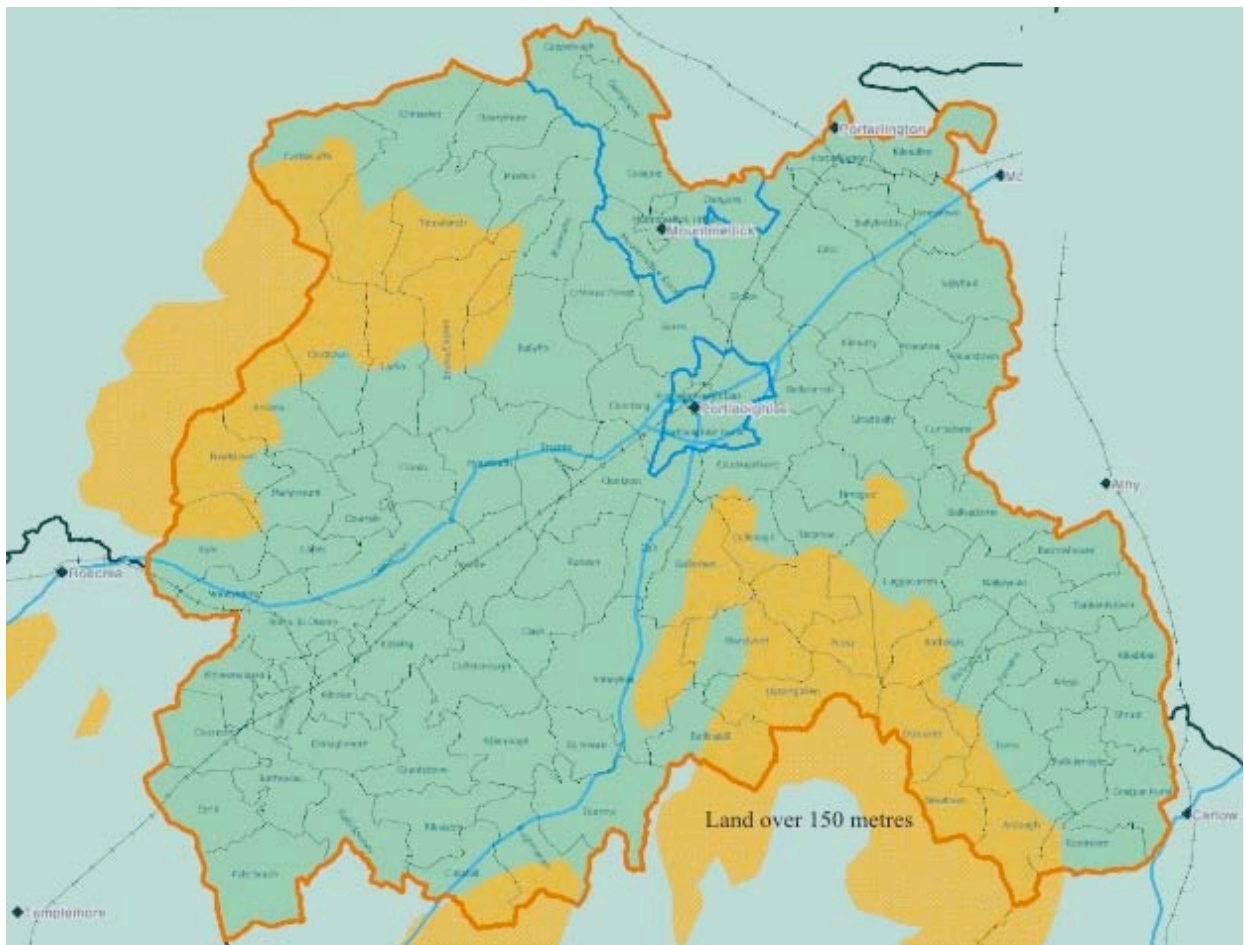


Figure 40 – District Electoral Divisions (CSO)

ID	DED	ID	DED	ID	DED
8001	Abbeyleix	8034	Moyanna	8069	O'Moore Forest
8002	Aughmacart	8035	Rathaspic	8070	Portarlinton
8003	Ballinakill	8036	Stradbally	8071	Portlaoighise Rural
8004	Ballyroan	8037	Tankardstown	8072	Portlaoighise Urban
8005	Blandsfort	8038	Timogue	8073	Rearymore
8006	Caher	8039	Vicarstown	8074	Rosenallis
8007	Castletown	8040	Arderin	8075	Sallyford
8008	Clash	8041	Ballybrittas	8076	Shaen
8009	Clonkeen	8042	Ballycarroll	8077	Tinnahinch
8010	Colt	8043	Ballyfin	8078	Trumra
8011	Cuffsborough	8044	Borris	8079	Ballybrophy
8012	Cullahill	8047	Cappalough	8080	Borris In Ossory
8013	Cullenagh	8048	Cardtown	8081	Clonmore
8014	Donaghmore	8049	Castlecluffe	8082	Errill
8015	Donore	8050	Clonaslee	8083	Kyle
8016	Dunmore	8051	Clondarig	8084	Kyle South
8017	Durrow	8052	Clonin	8085	Moneenalassa
8018	Dysartgallen	8053	Coolrain	8086	Moneymore
8019	Fossy	8054	Dangans	8087	Rathsaran
8020	Grantstown	8055	Emo	8088	Ardough
8021	Kilcoke	8056	Garrymore	8089	Arless
8022	Kildellig	8057	Graigue	8090	Ballickmoyler
8023	Killermogh	8058	Jamesstown	8091	Ballylethane
8024	Kilnaseer	8059	Kilcolmanbane	8092	Doonane
8025	Raheen	8060	Kilmullen	8093	Farnans
8026	Rathdowney	8061	Kilmurry	8094	Graigue Rural
8027	Timahoe	8062	Lacka	8095	Newtown
8028	Ballyadams	8063	Marymount	8096	Rossmore
8029	Ballylynan	8064	Meelick	8097	Shrulle
8030	Barrowhouse	8065	Mountmellick Rural	8098	Turra
8031	Curraclone	8066	Mountmellick Urban	8701	Brisha/Capard
8032	Killabban	8067	Mountrath		
8033	Luggacurren	8068	Nealstown		

Figure 41 – Town Populations 1996-2002 (CSO)

Town	Electoral Division	ED Ref.	1996		2002		% Change 1996-2002
			Persons	Persons	Males	Females	
Portlaoise	Portlaoise Maryborough Urban	72	3,531	3,482	1,799	1,683	-1.4
Portlaoise Environs	Portlaoise Maryborough Rural, Clondarrig, Borris (parts)	71, 51, 44	5,943	8,645	4,458	4,187	45.5
Mountmellick	Mountmellick Urban	66	2,325	2,525	1,268	1,257	8.6
Mountmellick Environs	Mountmellick Rural, Dangans, Graigue (parts)	65, 54, 57	587	863	422	414	42.4
Portarlinton	Portarlinton South (part)	70	2,162	2,756	1,377	1,379	27.5
Abbeyleix	Abbeyleix (part)	1	1,259	1,383	684	699	9.8
Mountrath	Mountrath (part)	67	1,298	1,331	661	670	2.5
Carlow Environs (part)	Graigue Rural (part)	94	870	1,199	585	614	37.8
Stradbally	Stradbally (part)	36	1,047	1,178	559	619	12.5
Rathdowney	Rathdowney, Rathsaren (parts)	26, 87	1,066	1,111	564	547	4.2
Durrow	Durrow (part)	17	696	717	347	370	3.0
Clonaslee	Clonaslee (part)	50	504	538	266	272	6.7
Ballylinan	Ballylinan (part)	29	406	430	221	209	5.9
Borris-in-Ossory	Borris-in-Ossory (part)	80	282	379	193	186	34.4
Ballinakill	Ballinakill (part)	3	299	328	167	161	9.7
Castletown	Castletown (part)	7	294	289	156	133	-1.7
Newtown	Doonane, Newtown (parts)	92, 95	207	245	118	127	18.4
Emo	Emo (part)	55	231	220	117	103	-4.8
Ballyroan	Ballyroan (part)	4	173	142	66	76	-17.9
Laois							11.0
Towns Showing % change above County							

3.4.1 Population Change

Between 1991 and 2002 many of the principle towns increased their population significantly. Portlaoise and environs had a growth rate of over 45%, and exhibited the classic outflow of population from the urban area to the rural hinterland.

Rural areas continued to experience a decline. In the same period, there was a decline in almost half of the 98 DEDs with most of the decline in the west of the county.

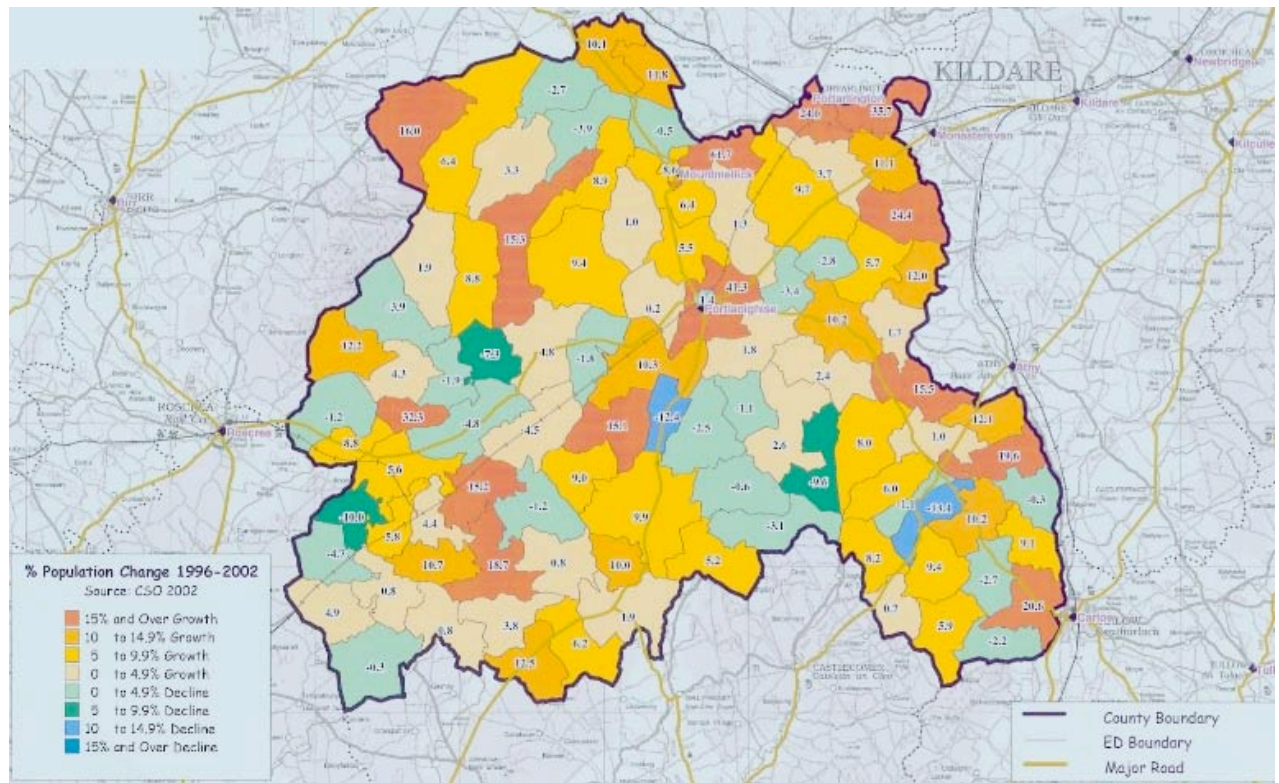
During the period 1991 to 2002 gains continued across the environs of Portlaoise, and the outskirts of Portarlinton, along with Carlow town, which supports urban generated growth in the southeast of the county.

The growth in both Portlaoise and the north east of the county in the hinterland of Portarlinton are clearly due to the continuing demand for housing in the outer fringes of the greater Dublin area.

Figure 42 – High Population Growth DEDs 1991-2002 (Gamma/CSO)

ID	DED	% Population Change 1991-2002	2002				
			Total Households	Females	Females Aged 15 to 44	Pop Aged 0 - 2	Lone Parents All Children < 15 Years
8006	Caher	12.3	26	37	15	6	0
8009	Clonkeen	14.6	185	308	131	30	2
8012	Cullahill	18.0	101	168	75	17	0
8025	Raheen	18.2	109	171	71	19	4
8030	Barrowhouse	21.8	132	214	92	17	3
8037	Tankardstown	19.6	87	136	58	9	1
8047	Cappalough	17.5	96	152	67	18	1
8049	Castlecuffe	16.0	118	180	74	19	1
8054	Dangans	102.6	189	337	174	43	18
8055	Emo	17.5	301	482	201	48	2
8058	Jamestown	15.9	125	207	76	11	4
8060	Kilmullen	45.8	151	241	106	29	2
8070	Portarlinton	27.8	1,116	1,631	775	192	50
8071	Portlaoighise Rural	64.1	2,650	4,319	2,160	579	164
8075	Sallyford	27.5	135	214	111	24	1
8086	Moneymore	13.9	37	54	18	7	0
8094	Graigue Rural	32.4	549	915	469	74	29
8701	Brisha/Capard	15.8	80	129	57	21	0
	Laois	12.3	18,556	28,643	12,545	2,818	634

Figure 43 – Distribution of Population Change 1996-2002 (Gamma/CSO)



3.5 Laois County Development Plan

Laois County Development Plan 2006 – 2012 (LCDP) outlines Laois County Council policies for ensuring balanced and sustainable economic and social growth throughout the County through direct action by Laois County Council internal departments and in conjunction with state, private and community sectors.

The Plan has regard to the Midlands Regional Planning Guidelines 2004 - 2010. It also takes account of the Laois County Development Board's Strategy – *'Realise Your Potential'* (2002-2012) and a range of other strategies and local plans and programmes.

3.5.1 Components of Population Growth

LCDP concludes that economic growth, over the period 1995 - 2005, has sparked-off a period of unprecedented development throughout the economy, which forms the main backdrop for the contemporary demographic trends at national, provincial and county level.

Dublin Commuter Belt

Significant from the perspective is the increasing influence of the greater Dublin commuter belt. This is as a result of improved road and rail access and the specific characteristics of the capital's housing market. Anecdotal evidence suggests that this phenomenon is responsible for a significant proportion of the population increase which has occurred in Portarlinton, Portlaoise and to a lesser extent in Mountmellick and in the rural areas in the east of the County.

Intra-County Trends

The Plan notes the sizeable population increase across the board, but also reflects that this masks some noticeable intra-county trends. The rates of increase between 1996 and 2002 in the county's three largest towns of Portlaoise, Portarlinton (Co. Laois area only) and Mountmellick stand at 28%, 27.5% and 15.4% respectively. Likewise, the population in the Carlow suburb of Graiguecullen and Borris-in-Ossory rose by 37.8% and 34% respectively, while the population of Stradbally grew by 12.5% and that of Abbeyleix by 9.8%.

By contrast, the rates of increase in other settlements are much smaller, Rathdowney recorded an increase of 4.2%, Durrow 3%, Mountrath 2.5% and Castletown's population actually fell by 1.7%. From the Laois County Council concludes that there is a divergence between the north and east of the county, where fastest growth rates are occurring, and the remainder of the county which is experiencing much more modest growth.

Rural Districts

Focusing on the five Rural Districts as the base unit for examining demographic change, a similar pattern unfolds. The population of Mountmellick rural area, which contains the three largest towns in Co. Laois, (Portlaoise, Portarlinton and Mountmellick) increased by 15.5%, followed by Athy no.2 rural area, which contains Stradbally, by 7.6%, while Slieve Margy rural area, where Graiguecullen is located, saw its population grow by 8.4%.

These county-wide demographic disparities are also apparent at townland level. Between 1996 and 2002, of the 28 townlands (out of a total number in Co. Laois of 98) that recorded population declines, 43% are located in Roscrea no.3 and Abbeyleix rural areas.

Conversely, the townlands exhibiting greatest population increase are almost exclusively in Mountmellick, Athy no.2 and Slieve Margy rural areas. Examples here include Dangan - population increase 62%, Portarlinton South - 24%, Portlaoise (Maryborough) rural - 41.3%: all of which are situated in close proximity to the largest urban centres in the county.

Urbanisation

LCDP notes that whilst County Laois is still an overwhelmingly rural county, the aggregate urban population is increasing. According to the 2002 census 33.1% of the population lived in urban areas. This is likely to have increased in the intervening period due to the declining agricultural base and net rural outward migration.

3.5.2 Population Projections

Laois County Council bases its population projections on the assumption that the 11% population growth rate experienced in the most recent intercensal period of 1996-02 is maintained. This translates into a county population, by 2020 of 80,380. This figure equates to 1.76% population growth per annum, compared to the CSO *'Regional Population Projections 2006-2021'* estimate of 1.4% for the Midlands region.

Figure 44 – LCDP vs. CSO Population Projections

	2002	2006	2007	2008	2009	2010	2011	2012	2013	2015	2020
CSO Projection	58,744	62,103	62,973	63,854	64,748	65,655	66,574	67,506	68,451	70,381	75,448
LCDP Projection	58,744	62,990	64,099	65,227	66,375	67,543	68,732	69,941	71,172	73,700	80,380

The ever-strengthening linkages between Co. Laois and the Greater Dublin Area (GDA) are noted as accounting for a substantial proportion of the projected population increase. Ongoing improvements in road and rail infrastructure coupled with the inflated state of the housing market in the capital, has increasingly propelled the northern part of the county into the Greater Dublin commuting zone.

The County Council report that whilst commuting has played a major part in the recent expansion of Co. Laois, in the long-term this is not considered sustainable for a variety of social and economic reasons including congestion, time and energy cost, pollution and diminution of family and community life.

Pending a state of equilibrium in the Dublin housing market (which the Plan considers unlikely to occur in the short term), daily commuting from Co. Laois to the Greater Dublin Area in particular, but also to Tullamore, Kilkenny and Carlow will continue for the foreseeable future. The reality of the current situation is reflected in the CSO 2002 Census, which records 10.8% of the population travelling over 48 km to school, work or college, compared to just 4.2% of the national population.

Given this scenario, the County Council acknowledges that one of the key challenges facing Co. Laois is how to reduce the dependency on commuting and at the same time build-up the social and economic critical mass of the county.

3.5.3 Settlement Strategy

LCDP defines the settlement strategy for 35 towns and villages. A summary of the strategic objectives indicating planned population growth for these settlements, based on the LCDP, are contained in Appendix A3.

Figure 45 – Settlement Strategy Towns and Villages (LCDP)

Ref.	Location	Ref.	Location	Ref.	Location	Ref.	Location
1	Abbeyleix	10	Borris-in-Ossory	19	Errill	28	Portlaoise
2	Arles	11	Camross	20	Graigucullen	29	Rathdowney
3	Attanagh	12	Castletown	21	Killenard	30	Rosenallis
4	Ballacolla	13	Clonaslee	22	Killeshin	31	Shanahoe
5	Ballinakill	14	Clough	23	Mountmellick	32	Stradbally
6	Ballybrittas	15	Coolrain	24	Mountrath	33	The Swan
7	Ballyfin	16	Cullahill	25	New Inn	34	Timahoe
8	Ballylynan	17	Durrow	26	Newtown Doonane	35	Vicarstown
9	Ballyroan	18	Emo	27	Portarlinton		

Portlaoise is the administrative and commercial capital of the county. It is also the largest urban centre in Co. Laois having experienced much residential development, particularly in its northern and western suburbs, since the late 1990s. Its current population, at over 12,000, is 3 times larger than that of the next town, Portarlinton.

This level of primacy is increasing in recent years due to improved road, rail and broadband communications, coupled with an extremely buoyant local housing market and further expansion of its retail base in line with the recommendations of the Co. Laois Retail Strategy.

The National Spatial Strategy recognises the potential of Portlaoise as a key national transport node with the capacity for associated economic and logistics activities.

The county town is supported by a strong network of secondary settlements throughout the county including Portarlinton, Mountmellick, Mountrath, Abbeyleix, Rathdowney, Graigucullen and Stradbally. Each with populations of between 1,100 and 4,000 these towns act as higher order service and employment centres for their catchment areas.

The biggest settlement in this group with a population of c.4,000 (including the Co. Offaly portion) is Portarlinton. Situated on the Laois/Offaly border and with a regular train service to Dublin much of the town’s development in recent years has been fuelled by its increasing popularity as a satellite destination for commuters.

High growth rates have also been a feature of Graiguecullen and Mountmellick while medium growth has occurred in Stradbally and Abbeyleix.

Other places in this secondary tier have not performed to the same level. In particular, Durrow, Rathdowney and Mountrath have failed to keep pace with either the nature or extent of development in the more northern and eastern settlements. A variety of reasons are responsible for this situation including declining local agricultural, service and industrial bases, relatively poor communications (especially in the case of Rathdowney), excessive distance from established commuting zones and limited infrastructure. The potentially positive impact of broadband availability in Rathdowney, Durrow, Ballacolla and Abbeyleix may help to ameliorate the hitherto poor communications.

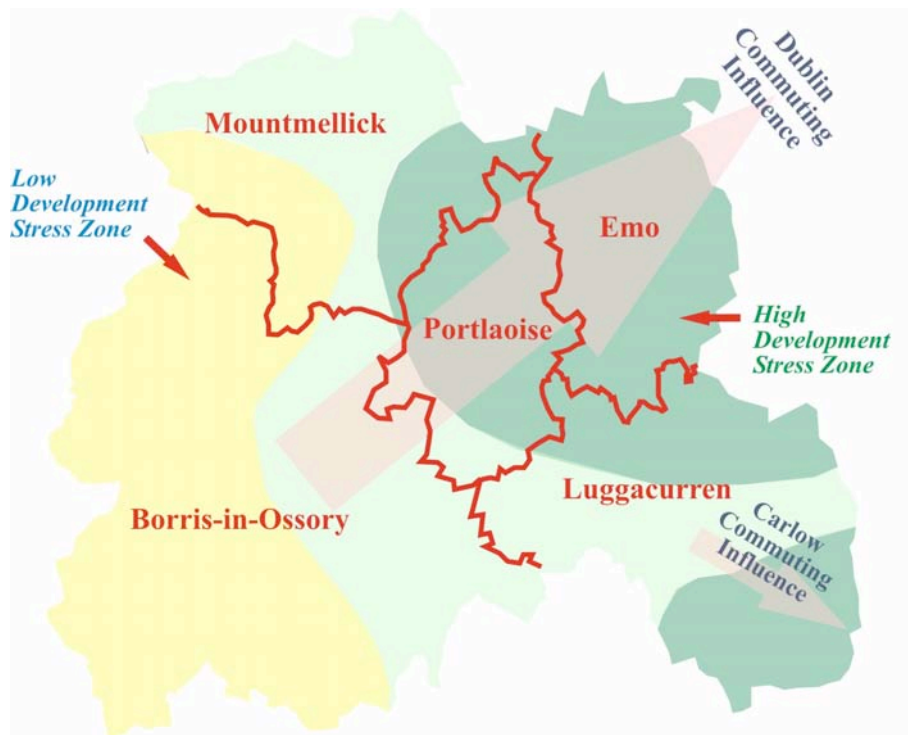
At the next level of the Co. Laois settlement hierarchy are tertiary settlements comprised of small towns/villages such as Emo, Ballinakill, Castletown, Ballylynan, Clonaslee, The Swan, Doonane-Crettyard, Ballyroan, Killenard, Durrow and Borris-in-Ossory. These provide facilities such as schools, churches, sports centres, community halls and convenience retail outlets together with low to medium order services for their residents and surrounding rural populations. In common with the secondary group, recent growth rates in the settlements in this group have varied with a similar north/east – south/west dichotomy apparent.

Small Villages/development nodes represent the final element of the Co. Laois urban settlement structure. These vary from concise settlements such as Ballyfin, Cullahill, Ballacolla, Rosenallis and Arles to smaller centres with a more dispersed and less cohesive pattern of development for example The Rock, Kilbricken etc.

3.5.4 Development Pressure

The centrality of County Laois, coupled with its proximity to greater Dublin has resulted in discernable spatial development pressures that have been identified by the County Council. Relative development pressure is measured by the level of planning application activity (development interest) in a given area compared to that experienced generally in the county.

Figure 46 – Zones of Development Pressure (after LCDP)



Areas to the north-east and south-east of the county are seen to under strong urban influence, emanating from Dublin.

Areas to the west of the county are considered to be structurally weak.

Areas in the centre band of the county are seen to comprise of stronger rural areas.

3.5.5 Contemporary Developments

Two factors that serve to shape the change of population level in any given area are house prices, and the much more recent phenomenon (in an Irish context) of immigration.

House Price Index

The relative rate of growth in the average price of a house in County Laois decreased from 15% during the period 2003-2004, to 6% in the period 2004-2005. This performance placed Laois at the bottom of the house price growth rate for the Midlands region in the latter period, with the average house price being some € 161,000 cheaper than Dublin. This differential almost certainly fuels the growth of commuting from County Laois to the metropolis, again reflecting the 10.8% of the population who were travelling more than 48 km to work, school or college in 2002, compared to just 4.2% of the population nationally.

Figure 47 - Average House Price Index 2005 (Permanent TSB)

		Growth '03-'04	2004 €	Growth '04-'05	2005 €
	Dublin	9%	334,822	10%	368,576
Midlands	Westmeath	12%	220,864	11%	245,664
	Offaly	15%	209,208	9%	227,470
	Laois	15%	212,982	6%	225,231
	Longford	5%	193,106	11%	214,527

The Department of the Environment and Local Government reported that almost 40,000 (50%) of housing completions in 2005 were in Cork, Dublin and the 'commuter counties'; this being a significant increase from 2004 levels. The recognised 'commuter counties', however, comprise of Kildare, Louth, Meath and Wicklow.

Immigration

Ireland, the UK and Sweden are the only countries to have allowed citizens of the ten new countries free access to their labour markets.

In the available data on immigration, the net inflow to Ireland in the year to April 2005 from the ten new countries was 26,000. However, the number of applicants for Personal Public Service (PPS) numbers in the period May 2004 to September 2005 totalled 139,000. Such applications are currently running at more than 11,000 per month. This would suggest that net immigration has picked up very strongly in the course of this year.

At a national level, the NCB Stockbrokers Limited report entitled 'The Irish Housing Market' (November 2005) concludes, amongst other findings, that:

- ❑ The continuing rise in the over 25 population provides a strong base for housing demand; and
- ❑ Immigration seems likely to accelerate because of the freedom of access granted to citizens of the ten new EU countries.

The Immigrant Council of Ireland in its report entitled 'Background Information and Statistics on Immigration to Ireland' (June 2005) notes that 'Non-Irish migrants, especially from outside the EU-15, have driven most of the recent growth in Ireland's immigration.

Their relative share of total inflows increased ... to 32% in 2000-2003. The increase and change in the composition of migration to Ireland has obviously had a significant impact on the country's population. The share of foreign-born people living in Ireland rose from 6% in 1991 to over 10% in 2002'.

The CSO estimates that 9% of immigrants are now Chinese and 8% are nationals from Central/Eastern European countries. This turnaround in migratory flows is a striking testament to the recent success of the Irish economy and the increasing availability of relatively the only country among the member states of the EU-15 (the fifteen countries which made up the EU until May 2004 when ten new states joined) with a negative net migration rate.

Disaggregated figures for the number of immigrants arriving in County Laois are not presently readily accessible, but there is no reason to believe that they do not constitute an additional component to the population of the county. At an incoming rate of approximately 120,000 per annum, it is possible that some additional 3% of the projected county population are now resident in Laois. Further, the demographic profile of the immigrant population generally falls into the 24-44 years of age category, and are likely to be potential customers for childcare services.

Figure 48 – Immigration Addition to Population Projections

Co. Laois	2006	2007	2008	2009	2010
CSO Projection	62,103	62,973	63,854	64,748	65,655
+ Immigration (3%)	63,966	64,862	65,770	66,690	67,625
LCDP Projection	62,990	64,099	65,227	66,375	67,543
+ Immigration (+3%)	64,880	66,022	67,184	68,366	69,569

3.6 Childcare Demand Summary

3.6.1 Population

Based on growth estimates provided by the CSO and Laois County Development Plan 2006-2012, the population of the county is likely to be in the region of 63,966 – 64,880 persons. This allows a factor of 3% growth to account for the increased levels of immigration that have been experienced since the accession of the latest Member states of the EU. It is estimated that the population of the county has grown by between 8.8% and 10.4% in the period 2002-2006.

3.6.2 Female Age Structure and Fertility Rate

Birth rate is a function of the number of women of child-bearing age (15-49 years) and the fertility levels of these women. In Ireland, 90% of births are to women aged 20-39 years. The Census of Population 2002 records 12,545 females aged 15 to 44 years in the county. This number is likely to have grown to approximately 14,000 in 2006. It is also assumed that the decline in the total fertility rate from 1.98 in 2003 to 1.85 by 2011 will be counter-balanced by the increase in the number of women aged 20-39 years.

3.6.3 Children

In 2002 there were 2,818 children aged between 0 and 2 years of age. In line with the above projections it is estimated that there are currently in the region of 3,100 children in that age range, with a further 2,050 aged between 3-4 years and 1,900 in the age range 5-6 years.

3.6.4 Potential Population Growth Nodes

The strategic location of County Laois, with Portlaoise sitting adjacent the M7/M8 corridor and the Tullamore-Rosslare National Transport Corridor, and with the new high speed Iarnrod Eireann Cork-Dublin rail service, suggests that strong infrastructure-related growth will continue into the future.

The housing market in the county appears to be retaining its price attractiveness relative to Dublin, with prices in County Longford beginning to rise to similar house-price values. The county is indicating a significantly greater than average number of people who are undertaking an extended commuting distance to work, school or college.

From this it is possible to identify the settlements that are all likely to be attractive to potential and existing commuters under the influence of greater Dublin. It is noted, however, that this influence is considered to place them under some degree of development pressure. This view can be further clarified by identifying those that are supported by development statements that are positively encouraging towards housing in the County Development Plan 2006-2012.

Figure 49 – Potential Population Growth Nodes

Ref.	Settlements Under Development Pressure (LCC)	Positive Housing Development Statements (CDP)
1		Attanagh
2		Ballacolla
3	Arles	Ballinakill
4	Ballybrittas	Ballybrittas
5	Ballyfin	Ballyroan
6	Ballylynan	Borris-in-Ossory
7		Clonaslee
8		Coolrain
9	Emo	Emo

/continued

/continued

Ref.	Settlements Under Development Pressure (LCC)	Positive Housing Development Statements (CDP)
10	Graigcullen	Errill
11	Killenard	Killenard
12	Mountmellick	Killeshin
13	Newtown Doonane	Timahoe
14	Portarlinton	
15	Portlaoise	
16	Stradbally	
17	Vicarstown	Vicarstown

The above table highlights settlements that are under development pressure, and are subject to positive housing development statements. From this analysis it can be seen that Ballybrittas, Emo and Vicarstown are common to being recognised as settlements under development pressure, and being recognised under the County Development Plan as capable of supporting additional housing development, and can thus be determined as being particularly likely population growth points.

4 Consultation Process 2006

The following section contains a summary analysis of relevant group consultations carried out by Laois County Childcare Committee Limited in April-May 2006.

Figure 50 – Survey Responses Obtained

Ref.	Service	Location
1	Merry Mornings Pre School	Abbeyleix
2	The Children's House Childcare Centre	Abbeyleix
3	Tiddlywinks Playschool & Crèche	Athy
4	Jollytots Community Playgroup	Ballinakill
5	An Tigh Sugradh Naionra	Ballinmosse
6	Bambino's	Ballybrittas
7	Iosa Linn	Ballybrittas
8	Tiny Footsteps	Ballyfin
9	Tutortime Playschool & After School	Ballylinan
10	Naionra	Ballyroan
11	The Village Crèche	Ballyroan
12	Happy Days Pre School	Borris Little, Portlaoise
13	Tir na nOg	Borris-in-Ossory
14	Tir na nOg Playschool	Borris-in-Ossory
15	Stepping Stones Pre School	Castletown
16	Tir na nOg Play school & After school Club	Clonaslee
17	Happy Days Montessori School	Clough Ballacolla
18	Pauline's Play Group	Crossneen, Co. Carlow
19	Durrow Community Playgroup	Durrow
20	Happy Days Crèche	Durrow
21	The Old Rectory Playschool	Emo
22	Tots Paradise	Errill
23	Graigucullen Parish Child Care Centre	Graigucullen
24	The Den	Killeshin, Co. Carlow
25	Little Stars Crèche & Montessori School	Kilminchy Village, Portlaoise
26	Busy Bee's Playschool & Child minding	Mountmellick
27	Claire's Montessori Pre-School	Mountmellick
28	Majella's Montessori School	Mountmellick
29	'Naomh Aine' Naionra	Mountmellick
30	Sonas Mountmellick Community Childcare	Mountmellick
31	Teach Na Leannai Youth Reach	Mountmellick
32	ABC Preschool Playgroup	Mountrath
33	Sandra's Playschool	Mountrath
34	An Oige	Portarlinton
35	Crann Nua	Portarlinton
36	Giggles Crèche	Portarlinton
37	Just 4 Kids	Portarlinton
38	Portarlinton After School	Portarlinton
39	Scallywags	Portarlinton
40	Silly Billies	Portarlinton
41	Tir na nOg Ballymorris	Portarlinton
42	Bernie Tynan's Pre-School	Portlaoise
43	Birchgrove After School Programme	Portlaoise
44	Bright Beginnings	Portlaoise
45	Graceland Crèche & Montessori	Portlaoise
46	Jan's Nursery & Playschool	Portlaoise
47	Judy's Play school	Portlaoise
48	Kilminchy School House	Portlaoise
49	Magic Moments	Portlaoise
50	O'Moore Place Childcare	Portlaoise
51	Portlaoise Crèche & Montessori	Portlaoise
52	Small World	Portlaoise
53	The Den Playgroup	Portlaoise
54	Tir na nOg Naionra	Portlaoise

/continued

/continued

Ref.	Service	Location
55	Working Towards Employment	Portlaoise
56	Cute & Clever	Rathdowney
57	Knock Kids Kare	Spink
58	A2Z Montessori School	Stradbally
59	Stradbally Montessori Pre School	Stradbally

4.1 Consultation Process Summary Outcomes

4.1.1 County Profile

Figure 51 – Service Model

Ref.	Service Providers	Number
1.1	Self Employed	46
1.2	Community Based	14
	Total	60

Figure 52 – Longevity of Service

Ref.	How long has your service been in operation?			
2	1-3yrs	3-5yrs	5-10yrs	over 10 yrs
	16	10	14	20
Ref.	Do you hope to be in operation for the next 5 years?			
3	Yes		No	
	56		4	

Figure 53 – Service Types Offered

Ref	Service Type	No.	Ref	Service Type	No.
4.1	Sessional Services offering: -		4.2	Full Day Care offering: -	
4.1.1	<input type="checkbox"/> Morning Session for 2/3-5/6 yrs	49	4.2.1	<input type="checkbox"/> Full day care for babies	14
4.1.2	<input type="checkbox"/> Afternoon sessions for 2/3 -5/6 yrs	6	4.2.2	<input type="checkbox"/> Full day for toddlers	17
4.1.3	<input type="checkbox"/> After School session for 5-12yrs	21	4.2.3	<input type="checkbox"/> Full day for pre-school children	16
4.1.4	<input type="checkbox"/> Other	5	4.2.4	<input type="checkbox"/> Afternoon session for 5-12yr olds	16
4.1.5	<input type="checkbox"/> Service is open in conjunction with School timetable	23	4.2.5	<input type="checkbox"/> Service is open in conjunction with school timetable	6
4.1.6	<input type="checkbox"/> Service is open all year around	15	4.2.6	<input type="checkbox"/> Service is open all year around	15
4.1.7	<input type="checkbox"/> Montessori	13	4.2.7	<input type="checkbox"/> Montessori	8
4.1.8	<input type="checkbox"/> Naionra	5	4.2.8	<input type="checkbox"/> Naionra	
4.1.9	<input type="checkbox"/> Other teaching method	2	4.2.9	<input type="checkbox"/> Other teaching method	2
4.1.10	<input type="checkbox"/> Breakfast Club	1	4.2.10	<input type="checkbox"/> Breakfast Club	1

4.1.2 Provision

Figure 54 – Current Provision

<i>Ref.</i>	Age	Numbers Attending	Number of Children Sharing a place	Numbers on waiting list (as the service is currently full)
5.1	0-1yr	47	4	23
5.2	1-2yrs	100	3	4
5.3	2-3yrs	204	73	
5.4	3-4yrs	785	288	38
5.5	4-6 yrs	437	117	17
5.6	6-8yrs/	81	3	3
5.7	8-10yrs	77	2	
5.8	10-12yrs	36	15	
5.9	Totals	1,767	505	85

Figure 55 – Numbers Waiting to Start September 2006

Numbers on waiting list due to commence in September 2006	573
------------------------------------------------------------------	------------

Figure 56 – Childminding Service

	Number of Children	Number of Childminders
How many children using the service also use childminding service?	289	289

Figure 57 – Service User Profile

<i>Ref.</i>		Numbers
6.1	Number of Families using the service that live less than 1 miles from the service	415
6.2	Number of Families using the service that travel 1-3 miles	414
6.3	Number of Families using the service that travel 3-5 miles	313
6.4	Number of Families using the service that travel 5-10 miles	80
6.5	Number of Families using the service that travel over 10 miles	65
6.6	Number of families using the service that have always lived locally	757
6.7	Number of families using the service that have moved into the area	381
6.8	Number of families using the service that have additional needs	71
6.9	Number of Traveller families using the service	30
6.10	Number of families using the service that come from other counties	96
6.10.1	<input type="checkbox"/> Number of Nigerian Families	8
6.10.2	<input type="checkbox"/> Number of Lithuanian Families	3
6.10.3	<input type="checkbox"/> Number of Latvian Families	1
6.10.4	<input type="checkbox"/> Number of Czech Families	1
6.10.5	<input type="checkbox"/> Number of Chinese Families	9
6.10.6	<input type="checkbox"/> Number of Polish Families	4
6.10.7	<input type="checkbox"/> Number of Pakistani Families	34
6.10.8	<input type="checkbox"/> Other	36

4.1.3 Fee Structures

Figure 58 – General Fee Structure

<i>Ref.</i>	Fees	Yes	No
7.1	Do you have standard fees?	52	7
7.2	Do you have reductions for 2 nd /3 rd child in the same family	44	14
7.3	Do you have a tiered fee structure	13	35

It is noted that a tiered fee structure is generally more relevant for community-based services.

4.1.4 Governance

Figure 59 – Policies and Procedures

<i>Ref.</i>	Policies and Procedures	Yes	No
8.1	Do you have policies and procedures	58	1
8.2	(If yes) Do they assist you in running the service?	54	4
8.3	Do you provide a leaflet for parents outlining the service?	51	5

4.1.5 Training

Figure 60 – Training Participation

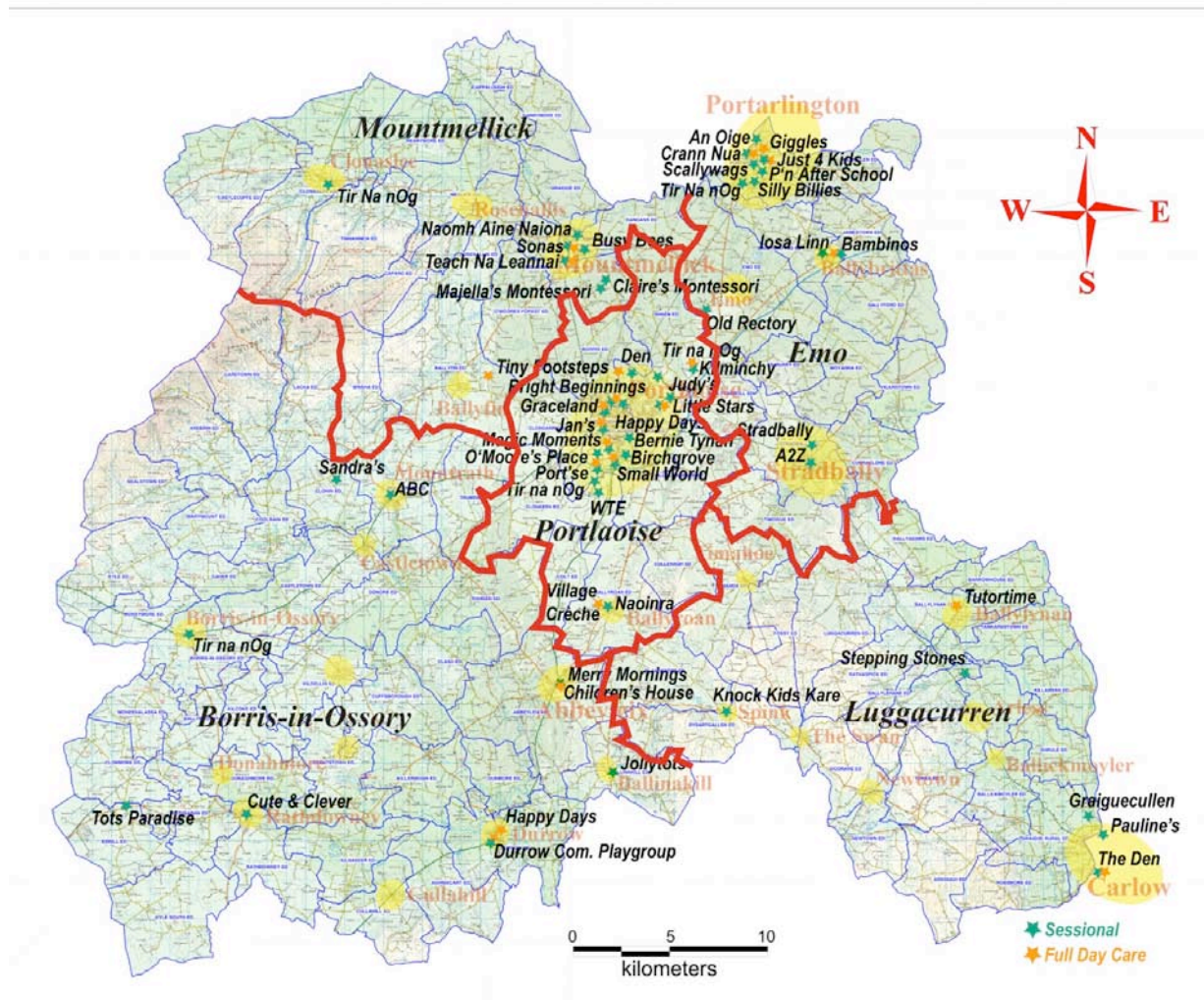
<i>Ref.</i>	Staff Training	First Aid	Health and Safety	Manual Handling	FETAC Level 5	FETAC Level 6	Diploma	Degree	Montessori	High Scope	Naionra
9.1	Staff	197	112	72	158	23	29	10	24	3	7
<i>Ref.</i>								Yes	No		
10.1	Have you or any staff taken part in quality programmes?							19			
<i>Ref.</i>								Yes	No		
11.1	Have staff completed other training not outlined above?							71			

5 Needs Analysis

The county can be divided into five Electoral Areas to permit direct comparison with the Pobal (formerly Area Development Management Limited) Childcare Census of 1999, and the subsequent Childcare Needs Analysis of 2004. The five Electoral Areas are: -

- ❑ Portlaoise;
- ❑ Mountmellick;
- ❑ Borris-in-Ossory;
- ❑ Luggacurren; and
- ❑ Emo.

Figure 61 – Five Electoral Areas



5.1 Portlaoise Area

Portlaoise Electoral Area contains ten DEDs, and is located central to the county. The topography is generally low-lying, although the extreme southeast of the area encroaches on Slieve Margy. Both the N7 and N8 converge outside Portlaoise, and the Dublin - Cork railway mainline serves the town.

Figure 62 – Portlaoise Electoral Area

ID	DED	Population 2002	% Population Change 1996- 2002	2002			
				Total Households	Females Aged 15 to 44	Pop Aged 0 - 2 Years	Lone Parents All Children < 15 Years
8004	Ballyroan	631	-2.5	192	135	21	4
8009	Clonkeen	619	10.3	185	131	30	2
8010	Colt	205	-12.4	64	32	4	0
8013	Cullenagh	92	-1.1	33	21	4	0
8044	Borris	384	5.5	112	64	14	0
8051	Clondarig	502	0.2	152	88	21	0
8059	Kilcolmanbane	513	1.8	150	107	18	1
8071	Portlaoighise Rural	8,934	41.3	2,650	2,160	579	164
8072	Portlaoighise Urban	3,482	-1.4	1,232	748	184	63
8076	Shaen	831	1.3	236	187	28	3
	Portlaoise	16,193	19.3	5,006	3,673	903	237

The 2002 Census of Population records 16,193 individuals in the Portlaoise Electoral Area, defined above. This represents an increase of 19.3% over the 1996 census figure of 13,578. This is almost twice the increase of 11% for the county during the same period.

Accepting an equal distribution of population growth across the county as projected previously, it is anticipated that the current population of the area will have grown by 1.76% per annum for the period since 2002, with an additional 3% per annum immigration over the past two years. The population estimate for 2006 may thus be calculated to be in the order of 18,400 persons (13.6% growth over the period).

The largest town in the area is the county capital, Portlaoise which together with its immediate environs had a population of 12,127 in 2002 (CSO – Population Classified by Area 2002). This represents an increase of 28% over the 1996 census figure. It is estimated that the population in 2006 is approximately 14,000 people.

5.1.1 Childcare Capacity

From the returns of the providers' survey, there were 18 respondents from the defined Portlaoise area, being an increase of 1 over the figure from the 2004 survey. These notified Childcare Providers account for 18 sessional services and 9 full day care services. This represents a sessional service increase of 63%, and full day care service increase of 12% over the 2004 position.

The survey reveals that a total of 565 children are registered for these services. Respondents confirmed that there were some 160 children on service waiting lists.

Figure 63 – Portlaoise Area Current Childcare Capacity

Ref.	Service	Location	Attending								Total	Waiting List
			0-1 Yoa	1-2 Yoa	2-3Yoa	3-4Yoa	4-6Yoa	6-8Yoa	8-10Yoa	10-12Yoa		
10	Naíonra	Ballyroan				7					7	6
11	The Village Crèche	Ballyroan	4	8	10	10					32	5
12	Happy Days Pre-School	Borris Little, Portlaoise				35					35	35
25	Little Stars Crèche & Montessori.	Kilminchy Village, Portlaoise	6	6	12		7	4			67	5
42	Bernie Tynan's Pre-School	Portlaoise				15	15				30	
43	Birchgrove After School Programme	Portlaoise						3		9	12	
44	Bright Beginnings	Portlaoise	6	7	10	10	6	6	3	1	49	13
45	Graceland Crèche & Montessori	Portlaoise	3	12	6	11	2				34	5
46	Jan's Nursery & Playschool	Portlaoise	1	5	6	12	4				28	
47	Judy's Play School	Portlaoise				14	6				20	3
48	Kilminchy School House	Portlaoise	2	6	9	22	7	6			52	
49	Magic Moments	Portlaoise		1	5	26		13			45	4
50	O'Moore Place Childcare	Portlaoise			17		40				57	24
51	Portlaoise Crèche & Montessori	Portlaoise	4	5	10	2	3	2			26	
52	Small World	Portlaoise		5	5	10	5	5			30	
53	The Den Playgroup	Portlaoise				11	20				31	18
54	Tir na nOg Naíonra	Portlaoise				10	18				28	16
55	Working Towards Employment	Portlaoise			6	7					13	
	Totals		26	55	96	245	133	39	3	10	596	138

The majority of respondents noted that they were operating at or near their maximum capacity.

5.1.2 Travel Distance

39 families are recorded as using the Childcare services that are travelling 16 or more kilometres, suggesting significant daily commuting journeys. A further 39 families are reported to travel between 8-16 km. to use the services. 47% of the service users are noted as travelling less than 1.6 km.

It is anticipated that the relatively long travel distances reflect commuting patterns that are more likely to be prevalent in the urban employment centre of Portlaoise.

5.2 Mountmellick Area

Mountmellick Electoral Area contains fifteen DEDs, located in the northwest of County Laois. Approximately 60% of the terrain is low-lying, with Slieve Bloom impinging in the southwest of the area. The Tullamore-Rosslare National Transport Corridor runs across the area on its way to Portlaoise.

At the time of the 2002 census, there was a population of 8,489 in the defined Mountmellick area, representing an increase of 10.1% over the 1996 Census of Population figure, and was tracking that of the County for the period.

Figure 64 – Mountmellick Electoral Area

ID	DED	Population 2002	% Population Change 1996-2002	2002			
				Total Households	Females Aged 15 to 44	Pop Aged 0 - 2 Years	Lone Parents All Children < 15 Years
8043	Ballyfin	547	9.4	166	100	24	2
8047	Cappalough	316	10.1	96	67	18	1
8049	Castlecuffe	376	16.0	118	74	19	1
8050	Clonaslee	883	6.4	277	181	46	12
8054	Dangans	689	61.7	189	174	43	18
8056	Garrymore	142	11.8	47	24	11	1
8057	Graigue	200	-0.5	66	38	5	1
8064	Meelick	297	-3.9	100	60	12	2
8065	Mountmellick Rural	968	6.4	284	203	32	3
8066	Mountmellick Urban	2,525	8.6	860	531	111	35
8069	O'Moore Forest	420	1.0	127	83	16	0
8073	Rearymore	257	-2.7	81	50	17	1
8074	Rosenallis	440	8.9	120	91	18	4
8077	Tinnahinch	158	3.3	60	31	2	0
8701	Brisha/Capard	271	12.8	80	57	21	0
	Totals	8,489	10.1	2,671	1,764	395	81

The Largest town in the area is Mountmellick, with a population of 2,325 in 2002. This level represents an increase of 8.6% over the corresponding 1996 population figures.

Mountmellick Urban DED (8066) returned a particularly low Relative Affluence/Deprivation Score in the Gamma statistical analysis of the 2002 Census of population. Clonaslee, Castlecuffe, Capard and particularly Brisha, also returned relatively low figures.

Figure 65 – Mountmellick Relative Affluence/Deprivation (Gamma)

	2002	1996	1991
Mountmellick Urban DED (8066)	-9.2	-9.8	-11.0
County Laois	-1.8	-0.6	-0.1

5.2.1 Childcare Capacity

There are seven Notified Pre-School Providers who responded to the Laois Childcare Committee survey located in the defined Mountmellick area. This represents a 75% increase over the four who were identified in the 2004 survey. Of these six are providing sessional services, and two are providing full day care (one provider offers both services).

Figure 66 – Mountmellick Area Current Childcare Capacity

Ref.	Service	Location	Attending								Total	Waiting List
			0-1 YoA	1-2 YoA	2-3Yoa	3-4YoA	4-6YoA	6-8YoA	8-10YoA	10-12YoA		
16	Tir na nOg Play School & After School Club	Clonaslee				28	3	7	4	3	45	27
26	Busy Bee's Playschool & Child minding	Mountmellick		3	4	3	1				11	0
27	Claire's Montessori Pre-School	Mountmellick				15					15	13
28	Majella's Montessori School	Mountmellick				25					25	8
29	Naomh Aine' Naionra	Mountmellick				36					36	
30	Sonas Mountmellick Community Childcare	Mountmellick	8	11		30		5			54	20
31	Teach Na Leannai Youth Reach	Mountmellick		4	3	1					8	
	Totals		8	18	7	138	4	12	4	3	194	68

A total of 201 children are registered as attending the services, this being a 69% increase in the numbers attending over the 119 children registered in 2004. There are some 70 children registered on waiting lists held by the providers.

5.2.2 Travel Distance

49% of families availing of Childcare services in the defined Mountmellick area are travelling between 1.6 and 5 km. In direct contrast with the Portlaoise area, there are no long-distance commuting families.

5.3 Borris-in-Ossory Area

Borris-in-Ossory defined area contains thirty-seven DEDs, and is located in the southwest of County Laois. The terrain is low-lying with the exception of Slieve Bloom to the northwest.

The National Transport Corridor of the N7 crosses the northern half of the area, with the N8 National Transport Corridor crosses to the south. The mainline Dublin-Cork rail artery bisects the defined area in a southwest direction.

Figure 67 – Borris-in-Ossory Electoral Area

ID	DED	Population 2002	% Population Change 1996- 2002	2002			
				Total Households	Females Aged 15 to 44	Pop Aged 0 - 2 Years	Lone Parents All Children < 15 Years
8001	Abbeyleix	2,379	9.9	791	474	97	27
8002	Aughmacart	257	6.2	79	43	10	2
8003	Ballinakill	682	5.2	203	123	20	2
8006	Caher	82	32.3	26	15	6	0
8007	Castletown	610	-4.8	196	104	15	4
8008	Clash	279	9.0	82	51	15	1
8011	Cuffsborough	245	-1.2	77	47	7	0
8012	Cullahill	341	12.5	101	75	17	0
8014	Donaghmore	248	10.7	82	52	10	2
8015	Donore	394	4.5	120	91	20	2
8016	Dunmore	209	10.0	61	36	4	0
8017	Durrow	1,164	1.9	395	252	44	10
8020	Grantstown	318	18.7	106	68	15	2
8021	Kilcoke	143	4.4	45	26	3	1
8022	Kildellig	197	15.2	60	38	17	1
8023	Killermogh	386	0.8	128	69	21	3
8024	Kilnaseer	304	3.8	96	61	15	4
8025	Raheen	350	15.1	109	71	19	0
8026	Rathdowney	1,285	0.8	454	238	57	23
8040	Arderin	198	-3.9	59	39	11	2
8048	Cardtown	157	1.9	46	31	5	1
8052	Clonin	177	-7.3	58	25	4	0
8053	Coolrain	262	-1.9	80	62	13	4
8062	Lacka	273	8.8	80	55	14	0
8063	Marymount	98	4.3	35	18	2	0
8067	Mountrath	1,896	4.8	635	406	80	32
8068	Nealstown	83	12.2	27	14	2	1
8078	Trumra	221	-1.8	79	35	9	1
8079	Ballybrophy	145	5.8	45	29	3	1
8080	Borris-in-Ossory	731	5.6	239	145	35	12
8081	Clonmore	202	-4.7	68	34	6	0
8082	Errill	365	4.9	123	72	14	5
8083	Kyle	255	-1.2	80	55	9	1
8084	Kyle South	287	-0.3	87	43	10	3
8085	Moneenalassa	126	-10.0	43	24	5	1
8086	Moneymore	123	8.8	37	18	7	0
8087	Rathsaran	390	0.8	132	66	10	1
	Totals	15,862	4.5	5,164	3,105	651	149

At the time of the 2002 Census of Population there was a recorded population of 15,862 in the Borris-in-Ossory defined area, representing a modest increase of 4.5% over the 1996 census figure. This figure is significantly lower than the population increase of 11% for the county during the same period.

Abbeyleix recorded a population of 2,379 in 2002, an increase of 9.9% over the 1996 census figures. Mountrath had 1,896 residents in 2002, representing an increase of 4.8% on the 1996 equivalent, whilst Rathdowney recorded a population of 1,285, reflecting a 0.8% increase on the 1996 figures.

5.3.1 Childcare Capacity

Figure 68 – Borris-in-Ossory Current Childcare Capacity

Ref.	Service	Location	0-1 Yoa	1-2 Yoa	2-3Yoa	3-4Yoa	4-6Yoa	6-8Yoa	8-10Yoa	10-12Yoa	Total	Waiting List
1	Merry Mornings Pre School	Abbeyleix				6	19				25	27
2	The Children’s House Childcare Centre	Abbeyleix	3	7	17	18	3	1	1	1	51	
4	Jollytots Community Playgroup	Ballinakill					18				18	
14	Tir na nOg Playschool	Borris-in-Ossory				16					16	
16	Durrow Community Playgroup	Durrow				8	18				26	15
17	Happy Days Crèche	Durrow	3	6	6	8	8				31	4
28	ABC Preschool Playgroup	Mountrath				2	10				12	
29	Sandra's Playschool	Mountrath			20						20	
53	Tots Paradise	Errill			1	7					8	7
55	Cute & Clever	Rathdowney				5	8				13	
	Totals		6	13	44	70	84	1	1	1	220	53

Respondents to the Laois County Childcare Committee survey identified that a total of ten providers were catering for 220 places across the defined Borris-in-Ossory area. This equates to the provision of 1 space per 72 head of population, compared to 1 per 29 in the defined Portlaoise area.

Seven of the respondents are providing sessional sessions, with a two providing a full day service. Of these, two providers were offering both sessional and full day services.

The 2004 report recorded 15 childcare providers in Borris-in-Ossory. 12 of these were sessional services, and 3 provided full time care and education. Two of these also provided additional sessional preschool services. Two services provide an after school service; one provides full day and one provides part-day holiday care.

Figure 69 – Additional HSE Notified Providers

Name	Location	Service Type
Jelly Tots	Abbeyleix	Full day care and Sessional
Magic Moments Childcare Services	Abbeyleix	Sessional
An Tigh Sugradh Naionra	Borris-in-Ossory	Sessional
Realtogi Townspark,	Borris-in-Ossory	Full day care and Sessional
Errill Community Playschool	Errill	Sessional

From the Childcare Providers registered with the HSE, an additional five services are noted above.

5.3.2 Travel Distance

Of the respondents to the survey, it was noted that 1% of families were travelling over 16 km to use the service. The majority (52%) are travelling between 1.6 and 5 km to use the services.

5.4 Luggacurren Area

The defined Luggacurren area contains twenty-two DEDs, and is located in the southeast of County Laois. Approximately half of Luggacurren is over 500 metres above sea level, with Slieve Margy dominating the topography. No National Transport Corridors or rail lines traverse area, although the main Dublin-Waterford rail line skirts the eastern boundary.

At the time of the 2002 census, there was a population of 8,876 in the Luggacurren area. Luggacurren, the largest settlement, has a population of less than 300 people.

The southernmost DEDs form the hinterland of Carlow Town, which had a population of 13,218, recorded in the 2002 Census of Population. Strong population growth is likely to continue in Carlow Town and environs for the foreseeable future, driven by proximity to greater Dublin. The DEDs situated in the eastern fringes of the Luggacurren area border Athy, which had a population of just over 6,000 at the 2002 census. The DEDs of Graigue Rural, Tankardstown, Ballyadams and Barrowhouse are growing at a faster rate than the county average due to their proximity to centres of population. Rathaspick, Shrule and Doonane are noted as being most disadvantaged, returning a Haase index of 9 or 10.

Figure 70 – Luggacurren Electoral Area

ID	DED	Population 2002	% Population Change 1996-2002	2002			
				Total Households	Females Aged 15 to 44	Pop Aged 0 - 2 Years	Lone Parents All Children < 15 Years
8005	Blandsfort	319	-0.6	93	63	16	1
8018	Dysartgallen	219	-3.1	79	49	9	0
8019	Fossy	94	-9.6	35	17	2	0
8027	Timahoe	517	2.6	144	101	21	5
8028	Ballyadams	291	15.5	97	55	23	2
8029	Ballylynan	780	1.0	243	184	32	6
8030	Barrowhouse	435	12.1	132	92	17	3
8032	Killabban	305	-0.3	91	67	8	0
8033	Luggacurren	298	8.0	95	62	22	4
8035	Rathaspic	229	6.0	77	33	7	1
8037	Tankardstown	268	19.6	87	58	9	1
8088	Ardough	305	5.9	92	60	11	5
8089	Arless	282	10.2	86	57	22	2
8090	Ballickmoyler	548	-2.7	160	129	22	2
8091	Ballylehane	177	-1.1	54	37	9	1
8092	Doonane	570	8.2	171	124	22	9
8093	Farnans	168	-13.4	58	24	6	2
8094	Graigue Rural	1,819	20.6	549	469	74	29
8095	Newtown	275	0.7	87	62	8	0
8096	Rossmore	397	-2.2	115	87	16	1
8097	Shrule	277	9.1	90	53	12	0
8098	Turra	303	9.4	92	57	15	1
	Totals	8,876	12.2	2,727	1,940	383	75

5.4.1 Childcare Capacity

Figure 71 – Luggacurren Area Current Childcare Capacity

Ref.	Service	Location	0-1 Yoa	1-2 Yoa	2-3Yoa	3-4Yoa	4-6Yoa	6-8Yoa	8-10Yoa	10-12Yoa	Total	Waiting List
9	Tutortime Playschool & After School	Ballylynan				17	28				45	45
18	Pauline's Play Group	Crossneen, Co. Carlow			2	12	9				23	
23	Graigecullen Parish Child Care Centre	Graigecullen				30	23	10	15	5	83	
24	The Den	Killeshin, Co. Carlow			3	29	28		30		90	20
15	Stepping Stones Pre School	Castletown			1	11					12	4
57	Knock Kids Kare	Spink			1	7	20	4		2	34	
	Totals		0	0	5	106	108	14	45	7	287	69

There are six Childcare Providers in Luggacurren who responded to the Laois county Childcare Committee survey. Three of these are located in the relatively densely populated Graigue Rural DED, which borders Carlow Town.

All of the service providers are providing sessional services, and one (The Den) is also providing full day service.

A total of 287 attendees are recorded, equating to a provision of 1 space per 32 head of population.

5.4.2 Travel Distance

Of the respondents to the survey, it was noted that only one family was travelling over 16 km to use the service. 36% of service users are travelling less than 1.6 km to avail of the services.

5.5 Emo Area

Emo Electoral Area contains thirteen DEDs located in the northeast of County Laois. The area is low-lying, with the exception of the relatively elevated area south of Stradbally.

The National Transport Corridor of the N7 and Dublin-Cork rail line run through the area in a south-westerly direction heading to Portlaoise, while the Dublin-Galway line passes through Portarlinton.

At the time of the 2002 census, there were 9,339 people living in the defined Emo area, representing an increase of 14.34% on the 1996 population; and exceeding the county population increase of 11%. Stradbally had a population of 1,634 in 2002. Emo has fewer than 1,500 inhabitants.

Portarlinton had a population of 3,263 in 2002, an increase of 633 from the 1996 population census. The population of Portarlinton is likely to continue increasing, as transport links improve between Dublin and neighbouring Kildare.

Stradbally is relatively disadvantaged, whilst Jamestown and Moyanna are relatively affluent.

Figure 72 – Emo Electoral Area

ID	DED	Population 2002	% Population Change 1996-2002	2002			
				Total Households	Females Aged 15 to 44	Pop Aged 0 - 2 Years	Lone Parents All Children < 15 Years
8031	Curraclone	182	1.7	58	32	9	1
8034	Moyanna	261	5.7	81	47	10	3
8036	Stradbally	1,634	10.2	524	380	98	23
8038	Timogue	346	2.4	98	72	9	0
8039	Vicarstown	168	12.0	52	37	9	0
8041	Ballybrittas	676	3.7	206	135	26	3
8042	Ballycarroll	286	-3.4	90	54	13	2
8055	Emo	985	9.7	301	201	48	2
8058	Jamestown	409	11.1	125	76	11	4
8060	Kilmullen	509	35.7	151	106	29	2
8061	Kilmurry	174	-2.8	51	37	8	1
8070	Portarlinton	3,260	24.0	1,116	775	192	50
8075	Sallyford	464	24.4	135	111	24	1
	Totals	9,354	14.5	2,988	2,063	486	92

5.5.2 Childcare Capacity

Figure 73 - Emo Area Current Childcare Capacity

Ref.	Service	Location	0-1 Yoa	1-2 Yoa	2-3Yoa	3-4Yoa	4-6Yoa	6-8Yoa	8-10Yoa	10-12Yoa	Total	Waiting List
6	Bambino's	Ballybrittas	2	2	3	4	3	2	4		20	1
7	Iosa Linn	Ballybrittas				15					15	
21	The Old Rectory Playschool	Emo				5	24				29	
34	An Oige	Portarlinton					28				28	20
35	Crann Nua	Portarlinton	2	1	8	8			2		21	
36	Giggles Crèche	Portarlinton		2	6	8	12	4			32	4
37	Just 4 Kids	Portarlinton		7	9	17	3				36	5
38	Portarlinton After School	Portarlinton						3	9	8	20	
39	Scallywags	Portarlinton			3	7	8				18	13
40	Silly Billies	Portarlinton			20						20	
37	Tir na nOg Ballymorris	Portarlinton				6	8	3	5	6	28	14
58	A2Z Montessori School	Stradbally				10	16				26	26
59	Stradbally Montessori Pre School	Stradbally				37					37	
	Totals		4	12	49	117	102	12	20	14	330	83

Twelve Notified Childcare Providers were identified in the described Emo area in the 2004 survey, with a total of 182 children registered and attending, and a further 58, predominantly 3 year olds, on waiting lists. Thirteen respondents

were recorded in the 2006 survey, with 330 children attending the services. This equates to a provision of 1 per 28 head of population of the area.

Thirteen providers are recorded as providing sessional services, with five full day services. Four of the providers are providing both sessional and full day services.

5.5.2 Travel Distance

Of the respondents to the survey, it was noted that the majority (56%) are travelling between 1.6 and 5 km to use the services.

A1 Appendix One – Genesis

In early 2004, Laois County Childcare Committee surveyed Local Development Groups to elicit their perspective on Childcare Needs within their area. In total, 27 Local Development Groups, ranging in size from Residents Associations acting for neighbourhood areas to Development Associations covering large tracts of the county, were surveyed.

Laois County Childcare Committee carried out a comprehensive survey of Childcare Services in Laois in the autumn of 2003. This was the most comprehensive information gathering exercise carried out with Laois Childcare Providers since the Area Development Management Childcare Census 1999, which informed the publication of the National Childcare Census Report and the County Laois Childcare Census Report.

Area Development Management Limited asked all County and City Childcare Committees to carry out a telephone survey of all Childcare Services in their area during late March 2004, for the purpose of gaining a snapshot of all childcare places in the cities, counties and nationally.

In the Budget 2006, the Government announced the establishment of the *National Childcare Investment Programme 2006 -2010* (NCIP), under the Office of the Minister for Children (OMC), as a successor to the earlier Equal Opportunities Childcare Programme.

The new National Childcare Investment Programme will have a capital funding element with grant aid available to both private and community providers for the building or expansion of childcare facilities, and a current funding element in order to assist with the staffing and other operating costs in community facilities that cannot meet the costs from fee income alone. The new Investment Programme is being introduced with the aim of funding 50,000 additional childcare places.

Using research, analysis and evaluation tools, Laois County Childcare Committee Limited commissioned an update of their Needs Analysis 2004 document.

A2 Appendix Two - Notified Pre-Schools

Figure 74 - All Co. Laois Notified Pre-Schools (HSE June 2006)

Ref.	Name	Address 1	Address 2	Location	Service Type	Category
1	Jelly Tots	Abbeyleix Women's Development Group	Fr. Breen Park	Abbeyleix	F.D.C. & Sessional	Community
2	Merry Mornings	Scoil Mhuire	Ballyroan Rd	Abbeyleix	Sessional	Private
3	The Children's House Childcare Centre	44 Fairway,	Ballyroan Road	Abbeyleix	F.D.C. & Sessional	Private
4	Magic Moments Childcare Services		Raheen	Abbeyleix	Sessional	Private
5	Knock Kids Kare	Spink Community Centre	Spink	Abbeyleix	Sessional	Community
6	Tiddlywinks	Cappanafeacle	Ballyadams,	Athy	Sessional	Private
7	Tutor Time	Rahin	Ballylynan	Athy	Sessional	Private
8	Jolly Tots Play Group		Church St	Ballinakill	Sessional	Community
9	Bambino's		Kilbracken	Ballybrittas	F.D.C. & Sessional	Private
10	Iosa Linn	Rath Community Centre	Rath	Ballybrittas	Sessional	Private
11	An Naionra Baile Atha An Roine		The Rock	Ballyroan	Sessional	Private
12	The Village Crèche		Bog Road	Ballyroan	Full Day Care	Private
13	An Tigh Sugradh Naionra	c/o Realtogi Crèche	Townspark,	Borris-in-Ossory	Sessional	Private
14	Tir na nOg,	Convent of Mercy	Castle Avenue	Borris-in-Ossory	Sessional	Community
15	Pauline's Playgroup	Aisfinto,	Crossneen	Carlow	Sessional	Private
16	Melanie Crèche	Springfield,	Graigcullen	Carlow	F.D.C. & Sessional	Private
17	The Den Pre-school	Beside Killeshin Hall,	Killeshin	Carlow	Sessional	Community
18	Tir na nOg Playschool	Old Boys National School,	Ballinakill	Clonaslee	Sessional	Community
19	Happy Days Montessori	Clough Hall		Clough	Sessional	Private
20	Happy Days Crèche	The Square		Durrow	F.D.C. & Sessional	Private
21	Durrow Community Playschool	Old Boy's School		Durrow	Sessional	Community
22	The Old Rectory Playschool	Coolbanagher		Emo	Sessional	Private
23	Realtogi Townspark,	Roscrea Road		Borris-in-Ossory	F.D.C. & Sess.	Private
24	Graiguecullen Parish Childcare Centre	Fiace's N.S.	Killeshin Road	Graiguecullen	Sessional	Community
25	Dome Pre-school,	Carlow Business Park	Sleaty Road,	Graiguecullen	Sessional	Private
26	Little Stars Crèche & Montessori			Kilminchy Village	F.D.C. & Sessional	Private
27	Teach na Leanai, Youthreach Crèche	Harbour Street		Mountmellick	F.D.C. & Sessional	Community
28	Majella's Montessori School	Acragar Cottage		Mountmellick	Sessional	Private
29	Naomh Aine Garoon			Mountmellick	Sessional	Private
30	Sonas Mountmellick Community Childcare	Pearse Street	Irishtown,	Mountmellick	F.D.C. & Sessional	Community
31	Busy Bee's Playschool	Manor Street		Mountmellick	Sessional	Private
32	Claire's Montessori Pre-school	Acragar		Mountmellick	Sessional	Private
33	ABC Playschool	Shannon Street		Mountrath	Sessional	Private
34	Sandra's Playschool	Clonincurragh		Mountrath	Sessional	Private

/continued

/continued

Ref.	Name	Address 1	Address 2	Location	Service Type	Category
35	Sally Wags	Bracklone Street		Portarlinton	Sessional	Private
36	Just 4 Kids	12 Barrow View		Portarlinton	F.D.C. & Sessional	Private
37	Giggles Crèche	95 Loughgate		Portarlinton	F.D.C. & Sessional	Private
38	Silly Billies Playschool	Bracklone Street		Portarlinton	Sessional	Private
39	The Ferns Play School	Main St		Portarlinton	Sessional	Private
40	Tir na nOg	Presentation Sisters,	Ballymorris Road	Portarlinton	Sessional	Community
41	Bright Beginning	34 Dunmasc		Portlaoise	F.D.C. & Sessional	Private
42	Graceland Crèche & Montessori	165 The Hermitage		Portlaoise	F.D.C. & Sessional	Private
43	Darling Buds Montessori & Day-care	Garden Village		Portlaoise	F.D.C. & Sessional	Private
44	Happy Days Pre-school	Borris Little		Portlaoise	F.D.C. & Sessional	Private
45	Jan's Nursery	Unit 5, Old Mill,	Church St.	Portlaoise	F.D.C. & Sessional	Private
46	Portlaoise Nursery and Playschool	Stradbally Road		Portlaoise	F.D.C. & Sessional	Private
47	Small World	Dublin Road		Portlaoise	F.D.C. & Sessional	Private
48	Kilminchy School House	Dublin Road		Portlaoise	F.D.C. & Sessional	Private
49	Bernie Tynan	24 Beechlawn		Portlaoise	Sessional	Private
50	Tir na Nog Naionra Boughlone,	Mountrath Road		Portlaoise	Sessional	Private
51	Judy's Playgroup	Dublin Road		Portlaoise	Sessional	Private
52	Tiny Footsteps	Knocknakearne,	Ballyfin	Portlaoise	Sessional	Private
53	Presentation Sisters Playschool	52 O'Moore Place		Portlaoise	Sessional	Community
54	Stella's Playschool	Pilgrim Hill, Castletown		Portlaoise	Sessional	Private
55	The Den Playgroup	10 Carrick Hill		Portlaoise	Sessional	Private
56	The Swan Playschool	Wolfhill		Portlaoise	Sessional	Private
57	PECAPS	Birchgrove Community Ctr		Portlaoise	Sessional	Community
58	Rise and Shine	53 Dunmasc		Portlaoise	Sessional	Private
59	National Association for Parent Support	17 Roselawn		Portlaoise	Sessional	Community
60	Errill Community Playschool	St. Bernadette's Hall,	Errill	Portlaoise	Sessional	Community
61	Magic Moments Montessori	78 Hawthorn Drive		Portlaoise	F.D.C. & Sessional	Private
62	Wee Wonders Crèche	Stradbrook,	Stradbally Road	Portlaoise	F.D.C.	Private
63	Cute & Clever Playschool	Johnstown Glebe		Rathdowney	Sessional	Private
64	Rathdowney Montessori School	Beechview,	Glosna Road	Rathdowney	Sessional	Private
65	A-Z Montessori School	Abbeyleix Road		Stradbally	Sessional	Private
66	Stradbally Montessori Pre-school	Vicarstown Road		Stradbally	Sessional	Private

Where- F.D.C = Full Day Care

A3 Appendix Three – Population Indicators by DED

Figure 75 – Population Indicators by DED (Gamma/CSO)

ID	DED	Population 2002	% Population Change 1991- 2002	2002			
				Total Households	Females Aged 15 to 44	Pop Aged 0 - 2 Years	Lone Parents All Children < 15 Years
8001	Abbeyleix	2,379	8.7	791	474	97	27
8002	Aughmacart	257	-8.9	79	43	10	2
8003	Ballinakill	682	5.1	203	123	20	2
8004	Ballyroan	631	1.1	192	135	21	4
8005	Blandsfort	319	-0.6	93	63	16	1
8006	Caher	82	12.3	26	15	6	0
8007	Castletown	610	-4.8	196	104	15	4
8008	Clash	279	9.0	82	51	15	1
8009	Clonkeen	619	14.6	185	131	30	2
8010	Colt	205	-11.6	64	32	4	0
8011	Cuffsborough	245	-2.8	77	47	7	0
8012	Cullahill	341	18.0	101	75	17	0
8013	Cullenagh	92	-13.2	33	21	4	0
8014	Donaghmore	248	5.1	82	52	10	2
8015	Donore	394	0.0	120	91	20	2
8016	Dunmore	209	1.5	61	36	4	0
8017	Durrow	1,164	-0.9	395	252	44	10
8018	Dysartgallen	219	-6.4	79	49	9	0
8019	Fossy	94	-33.8	35	17	2	0
8020	Grantstown	318	10.8	106	68	15	2
8021	Kilcoke	143	6.7	45	26	3	1
8022	Kildellig	197	11.9	60	38	17	1
8023	Killermogh	386	-2.3	128	69	21	3
8024	Kilnaseer	304	-0.3	96	61	15	4
8025	Raheen	350	18.2	109	71	19	0
8026	Rathdowney	1,285	3.5	454	238	57	23
8027	Timahoe	517	6.6	144	101	21	5
8028	Ballyadams	291	7.4	97	55	23	2
8029	Ballylynan	780	6.0	243	184	32	6
8030	Barrowhouse	435	21.8	132	92	17	3
8031	Curraclone	182	3.4	58	32	9	1
8032	Killabban	305	1.7	91	67	8	0
8033	Luggacurren	298	11.2	95	62	22	4
8034	Moyanna	261	12.0	81	47	10	3
8035	Rathaspic	229	0.9	77	33	7	1
8036	Stradbally	1,634	9.1	524	380	98	23
8037	Tankardstown	268	19.6	87	58	9	1
8038	Timogue	346	-2.0	98	72	9	0
8039	Vicarstown	168	3.1	52	37	9	0
8040	Arderin	198	2.6	59	39	11	2
8041	Ballybrittas	676	10.6	206	135	26	3
8042	Ballycarroll	286	5.5	90	54	13	2
8043	Ballyfin	547	-15.1	166	100	24	2
8044	Borris	384	11.3	112	64	14	0
8047	Cappalough	316	17.5	96	67	18	1

/continued

/continued

ID	DED	Population 2002	% Population Change 1991- 2002	2002			
				Total Households	Females Aged 15 to 44	Pop Aged 0 - 2 Years	Lone Parents All Children < 15 Years
8048	Cardtown	157	9.0	46	31	5	1
8049	Castlecuffe	376	16.0	118	74	19	1
8050	Clonaslee	883	3.2	277	181	46	12
8051	Clondarig	502	7.3	152	88	21	0
8052	Clonin	177	-3.3	58	25	4	0
8053	Coolrain	262	-2.6	80	62	13	4
8054	Dangans	689	102.6	189	174	43	18
8055	Emo	985	17.5	301	201	48	2
8056	Garrymore	142	8.4	47	24	11	1
8057	Graigue	200	-6.1	66	38	5	1
8058	Jamestown	409	15.9	125	76	11	4
8059	Kilcolmanbane	513	4.3	150	107	18	1
8060	Kilmullen	509	45.8	151	106	29	2
8061	Kilmurry	174	0.0	51	37	8	1
8062	Lacka	273	3.8	80	55	14	0
8063	Marymount	98	3.2	35	18	2	0
8064	Meelick	297	-7.5	100	60	12	2
8065	Mountmellick Rural	968	5.7	284	203	32	3
8066	Mountmellick Urban	2,525	1.2	860	531	111	35
8067	Mountrath	1,896	1.8	635	406	80	32
8068	Nealstown	83	-3.5	27	14	2	1
8069	O'Moore Forest	420	-1.6	127	83	16	0
8070	Portarlinton	3,260	27.8	1,116	775	192	50
8071	Portlaoighise Rural	8,934	64.1	2,650	2,160	579	164
8072	Portlaoighise Urban	3,482	-3.8	1,232	748	184	63
8073	Rearymore	257	-0.8	81	50	17	1
8074	Rosenallis	440	9.7	120	91	18	4
8075	Sallyford	464	27.5	135	111	24	1
8076	Shaen	831	1.3	236	187	28	3
8077	Tinnahinch	158	-3.7	60	31	2	0
8078	Trumra	221	-5.2	79	35	9	1
8079	Ballybrophy	145	-2.7	45	29	3	1
8080	Borris In Ossory	731	-1.9	239	145	35	12
8081	Clonmore	202	-10.6	68	34	6	0
8082	Errill	365	10.9	123	72	14	5
8083	Kyle	255	-11.8	80	55	9	1
8084	Kyle South	287	3.6	87	43	10	3
8085	Moneenalassa	126	-23.6	43	24	5	1
8086	Moneymore	123	13.9	37	18	7	0
8087	Rathsaran	390	-4.2	132	66	10	1
8088	Ardough	305	7.0	92	60	11	5
8089	Arless	282	0.0	86	57	22	2
8090	Ballickmoyler	548	-1.8	160	129	22	2
8091	Ballylehane	177	3.5	54	37	9	1
8092	Doonane	570	9.0	171	124	22	9
8093	Fanans	168	-5.6	58	24	6	2
8094	Graigue Rural	1,819	32.4	549	469	74	29
8095	Newtown	275	1.9	87	62	8	0
8096	Rossmore	397	4.2	115	87	16	1
8097	Shrule	277	-10.1	90	53	12	0

/continued

/continued

ID	DED	Population 2002	% Population Change 1991- 2002	2002			
				Total Households	Females Aged 15 to 44	Pop Aged 0 - 2 Years	Lone Parents All Children < 15 Years
8098	Turra	303	0.0	92	57	15	1
8701	Brisha/Capard	271	15.8	80	57	21	0
	Laois	58,774	12.3	18,556	12,545	2,818	634
	<i>Midlands</i>	<i>225,363</i>	<i>11.0</i>	<i>72,435</i>	<i>48,540</i>	<i>10,478</i>	<i>2,695</i>
	<i>National</i>	<i>3,917,203</i>	<i>11.1</i>	<i>1,287,958</i>	<i>907,768</i>	<i>166,208</i>	<i>50,267</i>

A4 Appendix Four - Identified Growth Settlements

Figure 76 – Growth Settlements 2006-2012 (LCDP)

No	Location	Strategy Comments	Summary Observations
1	Abbeyleix	During the last plan period, a number of private and social housing developments have started and are near completion. It is important that a range of housing types continue to be developed as part of future housing schemes. There are existing small scale employment areas west and south of Abbeyleix town centre. Very little developable land remains within the town centre, so all potential development will take place around the town to consolidate its urban core.	Little population growth envisaged.
2	Arless	Has not experienced major development pressure in recent years. The perception of easy access to Dublin and Limerick, has led to a planned motorway interchange in close proximity to Arles, while extensions of the National Motorway system may encourage future developments in the area.	Little population growth envisaged.
3	Attanagh	Council policy to: - <input type="checkbox"/> Encourage housing development within the village; <input type="checkbox"/> Ensure sufficient amounts of serviced land designated for residential use are available for housing purposes; <input type="checkbox"/> Encourage private house building and residential infill development within the development boundary; <input type="checkbox"/> Facilitate provision of housing by voluntary housing associations.	Population growth envisaged
4	Ballacolla	Ballacolla has experienced development pressure in recent years as a result of the growth of surrounding towns such as Portlaoise and also as a result of the perceived easier accessibility from Dublin with the opening of the Heath Mayfield by-pass and the development of the M7 from Dublin to Portlaoise. The village is likely to experience continued pressure once the construction of the M7/M8– Dublin to Limerick/ Cork motorway is completed. In the event of sewage treatment facilities becoming available, development may be allowed at densities of 3/5 houses per acre in the primary development zones.	Population growth envisaged
5	Ballinakill	Council policy to: - <input type="checkbox"/> Ensure sufficient amounts of serviced lands designated for residential use are available for housing purposes; <input type="checkbox"/> Encourage private house building and residential infill development within the development boundary; <input type="checkbox"/> Facilitate provision of housing by voluntary housing associations.	Population growth envisaged
6	Ballybrittas	Council policy to: - <input type="checkbox"/> Ensure sufficient amounts of serviced lands designated for residential use are available for housing purposes; <input type="checkbox"/> Encourage private house building and residential infill development within the development boundary; <input type="checkbox"/> Facilitate provision of housing by voluntary housing associations.	Population growth envisaged
7	Ballyfin	Council policy to: - <input type="checkbox"/> Encourage housing development; <input type="checkbox"/> Ensure sufficient amounts of lands designated for residential use are available for a range of housing purposes.	Limited population growth envisaged
8	Ballylynan	Development may be allowed at densities of 3/5 houses per acre in the primary development zones, subject to availability of capacity in the sewage treatment works.	Limited population growth envisaged
9	Ballyroan	Council policy to encourage housing development.	Population growth envisaged

/continued

/continued

No	Location	Strategy Comments	Summary Observations
10	Borris-in-Ossory	Borris-in-Ossory has experienced development pressure in recent years as a result of the growth of surrounding towns such as Portlaoise, Mountrath, and Roscrea and also as a result of the perception of easy access to Dublin and Limerick with a motorway interchange planned for the outskirts of the town itself. Development may be allowed at densities of 3/5 houses per acre in the primary development zones, subject to availability of capacity in the sewage treatment works.	Population growth envisaged.
11	Camross	Council policy to: - <input type="checkbox"/> Encourage housing development subject to provision of appropriate infrastructural services; <input type="checkbox"/> Ensure sufficient amounts of serviced land designated for residential use are available for housing purposes; <input type="checkbox"/> Encourage private house building and residential infill development within the development boundary; <input type="checkbox"/> Facilitate provision of housing by voluntary housing associations.	Limited population growth envisaged
12	Castletown	Development may be allowed at densities of 3/5 houses per acre in the primary development zones, subject to availability of capacity in the sewage treatment works.	Limited population growth envisaged
13	Clonaslee	Council policy to: - <input type="checkbox"/> Promote general business; <input type="checkbox"/> Ensure sufficient amounts of serviced lands designated for residential use are available for housing purposes; <input type="checkbox"/> Encourage private house building and residential infill development within the development boundary; <input type="checkbox"/> Facilitate provision of housing by voluntary housing associations.	Population growth envisaged.
14	Clough	Council policy to: - <input type="checkbox"/> Encourage housing development subject to provision/upgrading of appropriate infrastructural services; <input type="checkbox"/> Ensure sufficient amounts of serviced lands designated for residential use are available for housing purposes; <input type="checkbox"/> Encourage private house building and residential infill development within the development boundary; <input type="checkbox"/> Facilitate provision of housing by voluntary housing associations.	Limited population growth envisaged
15	Coolrain	Council policy to: - <input type="checkbox"/> Encourage housing development within the village; <input type="checkbox"/> Ensure sufficient amounts of land designated for residential use are available for housing purposes; <input type="checkbox"/> Encourage private house building and residential infill development within the development boundary; <input type="checkbox"/> Facilitate provision of housing by voluntary housing associations	Population growth envisaged
16	Cullahill	The village is situated on the National Primary N8 Dublin to Cork route and is to be bypassed with the construction of the M7/M8 motorway. At present there are limited services in the village. Council policy to: - <input type="checkbox"/> Ensure sufficient amounts of serviced lands designated for residential use are available for housing purposes; <input type="checkbox"/> Encourage private house building and residential infill development within the development boundary; <input type="checkbox"/> Facilitate provision of housing by voluntary housing associations.	Limited population growth envisaged
17	Durrow	A development boundary has been set for Durrow taking into account the developed areas and natural constraints and also the potential opportunities for growth within the area. Very little developable land remains within the town centre, so all potential development will take place around the town to consolidate its urban core.	Little population growth envisaged.

/continued

/continued

No	Location	Strategy Comments	Summary Observations
18	Emo	Emo has experienced development pressure in recent years as a result of the growth of surrounding towns such as Portlaoise, Portarlinton and Mountmellick and also as a result of the perceived easier access to Dublin with the opening of the Heath Mayfield bypass and the development of the M7 motorway from Dublin to Portlaoise. Council policy to: - <input type="checkbox"/> Encourage housing development within the village; <input type="checkbox"/> Ensure sufficient amounts of lands designated for residential use are available for housing purposes.	Population growth envisaged
19	Errill	Council policy to: - <input type="checkbox"/> Ensure sufficient amounts of land designated for residential use are available for housing purposes; <input type="checkbox"/> Encourage private house building and residential infill development within the development boundary; <input type="checkbox"/> Facilitate provision of housing by voluntary housing associations.	Population growth envisaged
20	Graiguecullen (Carlow Environs)	Local Area Plan to be prepared	
21	Killenard	Killenard has experienced substantial growth and development pressure in recent years as a result of the growth of surrounding towns such as Portlaoise, Portarlinton and due to the perceived easy access to Dublin and Limerick. Any future development should take place in the Primary Development Zone and should have regard to the planning guidelines for villages/settlements.	Population growth envisaged
22	Killeshin	Killeshin has experienced development pressure in recent years as a result of the growth of Carlow. Council policy to: - <input type="checkbox"/> Encourage housing developments subject to good urban design which will complement the character and heritage of the village; <input type="checkbox"/> Ensure sufficient amounts of lands designated for residential use are available for housing purposes; <input type="checkbox"/> Facilitate provision of housing by voluntary housing associations	Population growth envisaged
23	Mountmellick	Local Area Plan to be prepared	
24	Mountrath	Future development of the town can be pursued by developing the potential for tourism and harnessing the strong local and business commitment to the development of Mountrath. Strategies for the development of the town centre as a service centre for the Slieve Blooms can be explored and the urban core and environmental quality of the town redeveloped to provide a focus for the development of the town. The Market Square can be developed as a primary urban space for visitors and local people.	Little population growth envisaged.
25	New Inn	This consists of approximately 100 acres of land at an interchange on the motorway system close to New Inn Cross. Some Industrial Development exists at New Inn Cross. The lands have been zoned Industrial/General business.	No population growth envisaged.
26	Newtown Doonane	Council policy to: - <input type="checkbox"/> Encourage private house building and residential infill development within the development boundary; <input type="checkbox"/> Ensure sufficient amounts of lands designated for residential use are available for housing purposes; <input type="checkbox"/> Facilitate provision of housing by voluntary housing associations	Limited population growth envisaged
27	Portlaoise	Local Area Plan to be prepared	
28	Portarlinton	Local Area Plan to be prepared	
29	Rathdowney	Rathdowney has been designated a local service town in the Midlands Regional Planning Guidelines. The town has always been a local service centre for the surrounding agricultural hinterland with the cattle mart off the town square up until the mid 1990's. The largest employer within the town continues to be the meat factory.	Limited population growth envisaged

/continued

/continued

No	Location	Strategy Comments	Summary Observations
30	Rosenallis	Council policy to: - <input type="checkbox"/> Encourage private house building and residential infill development within the development boundary; <input type="checkbox"/> Ensure sufficient amounts of lands designated for residential use are available for housing purposes; <input type="checkbox"/> Facilitate provision of housing by voluntary housing associations	Limited population growth envisaged
31	Shanahoe	Council policy to: - <input type="checkbox"/> Encourage private house building and residential infill development within the development boundary; <input type="checkbox"/> Ensure sufficient amounts of lands designated for residential use are available for housing purposes; <input type="checkbox"/> Facilitate provision of housing by voluntary housing associations	Limited population growth envisaged
32	Stradbally	Stradbally has been designated a Service Town in the Midlands Regional Planning Guidelines. The foul sewage treatment system has limited capacity. Water supply is available.	Limited population growth envisaged
33	The Swan	The Swan has a low level of services and facilities. In the last five years the village has experienced a reasonably low level of growth despite a number of new residential developments. Council policy to: - <input type="checkbox"/> Encourage private house building and residential infill development within the development boundary; <input type="checkbox"/> Ensure sufficient amounts of lands designated for residential use are available for housing purposes; <input type="checkbox"/> Facilitate provision of housing by voluntary housing associations	Limited population growth envisaged
34	Timahoe	Council policy to: - <input type="checkbox"/> Encourage housing developments subject to good urban design which will complement the character and heritage of the village; <input type="checkbox"/> Ensure sufficient amounts of land designated for residential use are available for housing purposes; <input type="checkbox"/> Encourage private house building and residential infill development within the development boundary; <input type="checkbox"/> Facilitate provision of housing by voluntary housing associations	Population growth envisaged
35	Vicarstown	Council policy to: - <input type="checkbox"/> Ensure sufficient amounts of land designated for residential use are available for housing purposes; <input type="checkbox"/> Encourage private house building and residential infill development within the development boundary; <input type="checkbox"/> Facilitate provision of housing by voluntary housing associations; <input type="checkbox"/> Ensure all new residential development including social and affordable housing are to a high standard and make a positive contribution to the character of the village, while providing a safe and attractive environment for its residents	Population growth envisaged

A5 Appendix Five – County Childcare Funding

Figure 77 – County Childcare Funding 2000-April 2006

DATE	DED	NAME	ADDRESS 1	ADDRESS 2	Sub Measure	EU Approved - €
18.07.2000	Borris-in-Ossory	Abbeyleix Women's Development/Jellytots	Market Square	Abbeyleix	Staffing	181,573.00
14.12.2000	Emo	Iosa Linn Playground	Belgrove	Ballybrittas	Capital	11,918.00
30.06.2000	Mountmellick	Mountmellick CDA	Irishtown	Mountmellick	Other	31,220.00
18.07.2000	Mountmellick	Naomh Aine Preschool	Garoon	Mountmellick	Capital	9,739.00
18.09.2000	Portlaoise	O'Moore Place Childcare	67, O'Moore Place	Portlaoise	Staffing	104,586.00
TOTAL:						3,390,036.00
15.08.2001	Borris-in-Ossory	Sandra's Playschool	Trumera	Mountrath	Capital	2,628.00
11.10.2001	Borris-in-Ossory	Happy Days	Barnhill	Durrow	Capital	10,705.00
11.10.2001	Borris-in-Ossory	Abbeyleix Woman's Development/Jellytots	Market Square	Abbeyleix	Capital	59,319.00
11.12.2001	Borris-in-Ossory	Durrow Community Playground	Kilkenny Road	Durrow	Staffing	32,267.00
12.07.2001	Emo	A2Z Montessori School	Cork Road	Stradbally	Capital	50,790.00
09.11.2001	Luggacurren	Timahoe Tots Playschool	Garryglass	Timahoe	Capital	7,272.00
12.07.2001	Mountmellick	Mountmellick Youth Development Centre		Mountmellick	Staffing	70,404.00
11.12.2001	Mountmellick	Majella's Montessori School	Bridge Street	Mountmellick	Capital	5,055.00
16.02.2001	Portlaoise	Laois Community Development Network/Kidsworld	25, Church Street	Portlaoise	Staffing	96,442.00
16.02.2001	Portlaoise	Laois Community Development Network/Kidsworld	25, Church Street	Portlaoise	Capital	4,602.00
11.05.2001	Portlaoise	National Association for Parent Support	17, Roselawn, Harpur's Lane	Portlaoise	Staffing	44,441.00
12.07.2001	Portlaoise	O'Moore Place Childcare	67, O'Moore Place	Portlaoise	Staffing	266,112.00
12.07.2001	Portlaoise	PCAP	Railway Street	Portlaoise	Capital	10,158.00
12.07.2001	Portlaoise	PCAP	Railway Street	Portlaoise	Staffing	33,013.00
15.08.2001	Portlaoise	PCAP	Railway Street	Portlaoise	Staffing	95,230.00
15.08.2001	Portlaoise	PCAP	Railway Street	Portlaoise	Capital	15,745.00
05.09.2001	Portlaoise	Naionra Baile Atha an Roine	An Charraig, Ballyroan	Portlaoise	Capital	43,041.00
11.10.2001	Portlaoise	Happy Days Playschool	Borris Little	Portlaoise	Capital	50,790.00
09.11.2001	Portlaoise	PCAP	Railway Street	Portlaoise	Capital	1,416.00
11.12.2001	Portlaoise	Bernie Tynan's Playschool	24, Beechlawn	Portlaoise	Capital	15,849.00
14.06.2001	Portlaoise	Oak Park Project	County Hall	Portlaoise	Staffing	44,441.00
TOTAL:						959,720.00

/continued

/continued

DATE	DED	NAME	ADDRESS 1	ADDRESS 2	Sub Measure	EU Approved €
24.04.2002	Borris-in-Ossory	Ballinakill Community Playground	Church Street	Ballinakill	Capital	0
24.04.2002	Borris-in-Ossory	Ballinakill Women's Community Group	Church Street	Ballinakill	Staffing	0
16.07.2002	Borris-in-Ossory	Ballinakill Community Playground	Church Street	Ballinakill	Capital	70,650.00
16.07.2002	Borris-in-Ossory	Ballinakill Women's Community Group	Church Street	Ballinakill	Staffing	12,000.00
09.09.2002	Emo	Bambinos	Kilbracken	Ballybrittas	Capital	50,790.00
14.12.2002	Emo	Angela Tansey Stephens	Droughill	Portarlinton	Capital	32,854.00
22.03.2002	Luggacurren	Graigucullen Parish Childcare Services	Parochial House	Graigucullen	Capital	82,500.00
22.03.2002	Luggacurren	Graigucullen Parish Childcare Services	Parochial House	Graigucullen	Staffing	75,786.00
16.07.2002	Luggacurren	Romanesque Development Ltd	Rossmore/Killeshin	Luggacurren	Capital	113,000.00
16.07.2002	Luggacurren	Romanesque Development Ltd	Rossmore/Killeshin	Luggacurren	Staffing	135,000.00
06.08.2002	Luggacurren	Melanie's Childcare Centre	Springhill Road	Graigucullen	Capital	50,790.00
09.01.2002	Mountmellick	Mountmellick Community Childcare	Irishtown	Mountmellick	Capital	1,405,783
31.03.2002	Mountmellick	Mountmellick CDA	Irishtown	Mountmellick	Other	36,359.00
24.04.2002	Mountmellick	Mountmellick Methodist Church Mother & Toddler Group	The Manse, Irishtown	Mountmellick	Capital	0
06.08.2002	Mountmellick	Naomh Aine Preschool	Garoon	Mountmellick	Capital	6,892.00
30.10.2002	Mountmellick	Mountmellick Community Childcare	Irishtown	Mountmellick	Capital	417,822.00
09.01.2002	Portlaoise	Smallworld	21, Borris Little	Portlaoise	Capital	23,104.00
31.03.2002	Portlaoise	PCAP	Railway Street	Portlaoise	Other	43,056.00
19.06.2002	Portlaoise	PCAP	Railway Street	Portlaoise	Staffing	7,618.00
16.07.2002	Portlaoise	Darling Buds Montessori	8, The Garden Village	Portlaoise	Capital	50,790.00
TOTAL:						2,614,794.00

/continued

/continued

DATE	DED	NAME	ADDRESS 1	ADDRESS 2	Sub Measure	EU Approved €
07.03.2003	Borris-in-Ossory	Clonaslee Community Development Association Ltd.	Ballykaneen	Clonaslee	Staffing	60,000.00
20.05.2003	Borris-in-Ossory	Durrow Community Playground		Durrow	Staffing	26,531.00
05.09.2003	Borris-in-Ossory	Abbeyleix Women's Development/Jellytots	Market Square	Abbeyleix	Staffing	60,524.00
05.09.2003	Borris-in-Ossory	Happy Days	Clough Hall, Clough	Ballacolla	Capital	6,500.00
05.09.2003	Borris-in-Ossory	Spink Community Development Assoc.	Spink	Abbeyleix	Capital	15,750.00
05.09.2003	Borris-in-Ossory	Spink Community Development Assoc.	Spink	Abbeyleix	Staffing	96,000.00
11.12.2003	Borris-in-Ossory	Naionra Baile Atha an Roine	An Charraig	Ballyroan	Capital	9,967.00
21.01.2003	Portlaoise	National Association for Parent Support	84 Main Street	Portlaoise	Staffing	45,000.00
29.07.2003	Portlaoise	O'Moore Place Childcare	67, O'Moore Place	Portlaoise	Staffing	32,500.00
05.09.2003	Portlaoise	Tiny Footsteps	88, Newpark	Portlaoise	Capital	44,277.00
21.07.2003	Luggacurren	Graigucullen Parish Childcare Services	Graigucullen	Co. Laois	Staffing	40,000.00
16.10.2003	Mountmellick	Naomh Aine Preschool	Garoon	Mountmellick	Capital	24,493.00
TOTAL:						461,542.00
10.06.2004	Borris-in-Ossory	Happy Days	The Square	Durrow	Capital	5,950.00
10.06.2004	Borris-in-Ossory	Tutortime Playschool	Rahinn	Ballylinan, Athy,	Capital	50,790.00
30.11.2004	Borris-in-Ossory	Abbeyleix Women's Development/Jellytots	Market Square	Abbeyleix	Staffing	40,349.00
11.10.2004	Borris-in-Ossory	Abbeyleix Women's Development/Jellytots	Market Square	Abbeyleix	Staffing	25,218.00
14.01.2004	Mountmellick	Mountmellick Community Childcare	Irishtown	Mountmellick	Staffing	315,000.00
16.12.2004	Mountmellick	Claire's Montessori School	Acragar	Mountmellick	Capital	33,475.00
14.01.2004	Portlaoise	Kilminchy School House	Dublin Road	Portlaoise	Capital	50,790.00
10.06.2004	Portlaoise	O'Moore Place Childcare	52, O'Moore Place	Portlaoise	Staffing	65,000.00
29.06.2004	Portlaoise	National Association for Parent Support	84, Main Street	Portlaoise	Staffing	21,000.00
11.10.2004	Portlaoise	PCAP	Railway Street	Portlaoise	Staffing	2,751.00
30.10.2004	Portlaoise	PCAP	Railway Street	Portlaoise	Staffing	7,336.00
08.11.2004	Portlaoise	Edith O'Sullivan	Bog Road, Ballyroan	Portlaoise	Capital	50,790.00
TOTAL:						668,449.00

/continued

/continued

DATE	DED	NAME	ADDRESS 1	ADDRESS 2	Sub Measure	EU Approved €
29.04.2005	Borris-in-Ossory	Abbeyleix Women's Development/Jellytots	Market Square	Abbeyleix	Staffing	162,500.00
26.05.2005	Borris-in-Ossory	Durrow Community Playground		Durrow	Staffing	35,600.00
26.05.2005	Borris-in-Ossory	Durrow Community Playground		Durrow	Staffing	2,210.00
04.03.2005	Emo	Portarlinton Childcare Committee	Community Centre, Link Road	Portarlinton	Capital	1,400,000.00
22.06.2005	Emo	Ballymorris Pre-School Committee	c/o Presentation Sisters	Portarlinton	Capital	20,000.00
18.11.2005	Emo	Mary Mulhall	Edenderry Road	Portarlinton	Capital	50,790.00
18.11.2005	Emo	Portarlinton Community Development Assoc.	Link Road	Portarlinton	Staffing	90,000.00
16.03.2005	Mountmellick	Mountmellick Development Centre/Youth Centre		Mountmellick	Staffing	63,000.00
26.05.2005	Luggacurren	Graigucullen Parish Childcare Services	Parochial House	Graigucullen	Staffing	121,500.00
12.12.2005	Luggacurren	Chatterboxes	Heatherwood	Graigucullen	Capital	50,790.00
08.03.2005	Portlaoise	Jan's Nursery	Unit 5, Old Mill,	Portlaoise	Capital	45,800.00
29.04.2005	Portlaoise	O'Moore Place Childcare	52, O'Moore Place	Portlaoise	Staffing	170,400.00
29.04.2005	Portlaoise	PCAP/Portlaoise Pre-Employment Programme Crèche Facility	Railway Street	Portlaoise	Staffing	29,600.00
14.07.2005	Portlaoise	National Association for Parent Support	17, Roselawn, Harpur's Lane	Portlaoise	Staffing	59,900.00
27.09.2005	Portlaoise	PCAP/Portlaoise Pre-Employment Programme Crèche Facility	Railway Street	Portlaoise	Staffing	95,800.00
TOTAL:						2,397,890.00
24.03.2006	Emo	Ballymorris Pre-School Committee	c/o Presentation Sisters	Portarlinton	Capital	11,000.00
TOTAL:						11,000.00
TOTAL 2000 - 2006						

B1 Bibliography

- ❑ Appraisal of Development Opportunities at Portlaoise Motorway Interchanges - *Branniff Report*;
- ❑ County Laois Play Strategy 2004-2008;
- ❑ Economic/Promotional Strategy for County Laois - *A & L Goodbody Report*;
- ❑ Homelessness - An Integrated Strategy for County Laois;
- ❑ Laois Arts Plan 2006-2011;
- ❑ Laois County Childcare Strategy 2002 – 2006;
- ❑ Laois County Council Corporate Plan 2004-2009;
- ❑ Laois County Council Housing Strategy 2005-2011;
- ❑ Laois County Development Board Strategic Plan – ‘*Realise Your Potential*’ (2002-2012)
- ❑ Laois County Development Plan 2006 – 2012;
- ❑ Laois County Heritage Plan 2002-2006;
- ❑ Laois Retail Strategy 2003;
- ❑ Midlands Regional Planning Guidelines 2004 – 2010;
- ❑ Portarlinton Land Use and Transportation Strategy;
- ❑ Portlaoise Land Use and Transportation Study 2000;
- ❑ The Accommodation of Travelling Families in County Laois 2005-2008.
- ❑ NCB Stockbrokers Limited report entitled ‘The Irish Housing Market’ (November 2005)